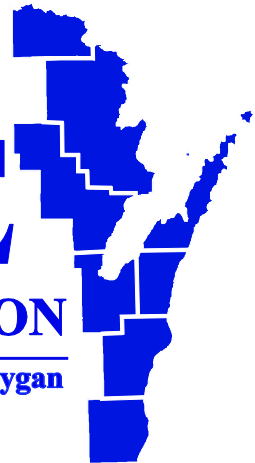


# **BAY-LAKE REGIONAL PLANNING COMMISSION**

## **2015 Regional Transportation Work Program**

**BAY-LAKE**  
**REGIONAL PLANNING COMMISSION**

**Brown•Door•Florence•Kewaunee•Manitowoc•Marinette•Oconto•Sheboygan**





**BAY-LAKE REGIONAL PLANNING COMMISSION**  
**2015 REGIONAL TRANSPORTATION**  
**WORK PROGRAM**

WisDOT Approved: November 5, 2014  
Commission Adopted: December 12, 2014

Principal Author:  
Brandon Robinson  
Community Assistance Planner

Bay-Lake Regional Planning Commission  
425 South Adams Street, Suite 201  
Green Bay, WI 54301  
Phone: (920) 448-2820  
Fax: (920) 448-2823  
Website: [www.baylakerpc.org](http://www.baylakerpc.org)  
E-mail: [brobinson@baylakerpc.org](mailto:brobinson@baylakerpc.org)



**TABLE OF CONTENTS**

INTRODUCTION ..... 1  
     Creation and Authority ..... 1  
     Area Served ..... 1  
 ORGANIZATION ..... 1  
 REGIONAL TRANSPORTATION WORK PROGRAM ..... 3  
     Funding Source..... 3  
 2014 TITLE VI ACCOMPLISHMENTS ..... 3  
 2015 WORK PROGRAM ACTIVITIES..... 3  
     1110 Program Administration ..... 3  
     1120 Public Participation ..... 4  
     1130 Regional Transportation Planning..... 4  
         1131 Transportation and Economic Development Planning..... 4  
         1132 Regional Comprehensive Plan-Transportation Element ..... 4  
         1133 Bicycle and Pedestrian Planning ..... 4  
         1134 Railroad Planning ..... 4  
         1135 Corridor Planning and Environmental Feasibility Studies ..... 5  
         1136 Airport Planning ..... 5  
         1137 Port and Harbor Planning ..... 5  
     1140 Specialized Transportation Planning..... 5  
         1141 Specialized Transportation Planning..... 5  
         1142 Transit Planning ..... 5  
         1143 Special Transportation Services Planning..... 5  
     1150 Local Assistance..... 6  
         1151 Community Transportation Planning ..... 6  
         1152 Pavement Management Surveys ..... 6  
         1153 Grant Writing ..... 6  
     1160 State and Federal Assistance and Coordination ..... 7  
         1161 Technical and Policy Advisory Committees ..... 7  
         1163 Implementation of State Transportation Plans ..... 7  
         1164 Monitor State and Federal Legislation ..... 7  
         1165 Workshops and Meetings ..... 7  
 PROGRAM SCHEDULE..... 8

**LIST OF TABLES**

TABLE 1: BAY-LAKE RPC - TENTATIVE MEETING DATES - 2015 ..... 7  
 TABLE 2: REGIONAL TRANSPORTATION WORK PROGRAM SCHEDULE – 2015 ..... 9

**LIST OF MAPS**

Map 1: Location Map, Bay-Lake Region ..... 2

## **INTRODUCTION**

### **Creation and Authority**

By Executive Order 35, Governor Lucey created the Bay-Lake Regional Planning Commission in 1972 under Section 66.945 of the Wisconsin Statutes (now re-titled Section 66.0309, under Chapter 66 General Municipality Law, Subchapter III, Intergovernmental Cooperation of the 99-00 Wis. Stats.) as the official areawide planning agency for northeastern Wisconsin, at the request of seven county boards within the region. In December 1973, Florence County joined the Commission, bringing the total number of counties to eight (Map 1).

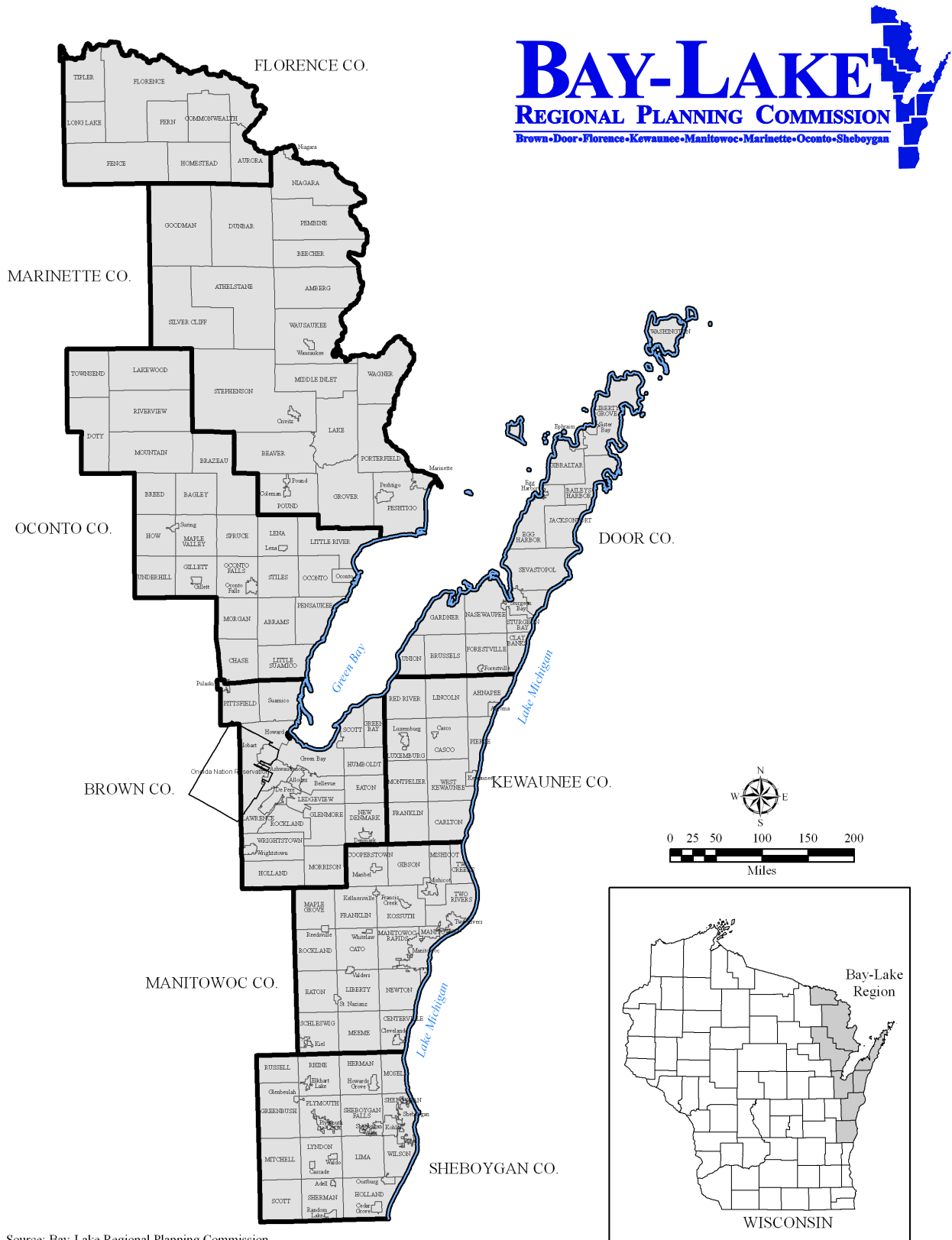
### **Area Served**

The Commission serves a region in Northeastern Wisconsin consisting of the counties of Brown, Door, Florence, Kewaunee, Manitowoc, Marinette, Oconto and Sheboygan. The Bay-Lake Region is comprised of eight counties, 17 cities, 40 villages, 119 towns, and the Oneida Nation of Wisconsin, for a total of 185 local units of government. The total area of the region is 5,433 square miles, or 9.7 percent of the area of the State of Wisconsin. The region has over 400 miles of coastal shoreline along Lake Michigan and Green Bay, and contains 12 major watershed areas that drain into the waters of Green Bay and Lake Michigan. The Wisconsin Demographic Services Center 2014 population estimate of the region is 582,535 persons, or 10.2 percent of the estimated population of the State of Wisconsin (5,732,981).

## **ORGANIZATION**

The composition of the Governing Board (Commissioners) of the Commission is as follows: (1) One Commissioner is appointed by the county board of each member and non-member county (Note: non-member counties do not have voting privileges); (2) Two Commissioners from each member county are appointed by the Governor, with one of the Commissioners selected from a list of persons submitted by the county board; and (3) The CEO of the Wisconsin Economic Development Corporation or a designee serves as a nonvoting member. As of September 2014, twelve of the Commissioners are classified as elected officials and/or employees of a general purpose unit of government who have been appointed to represent that government, and seven Commissioners are classified as private citizens. The Commission holds eight meetings per year (four full Commission meetings and four Executive Committee meetings) and annually elects a chairperson, a vice-chairperson, and a secretary-treasurer at its September Annual Meeting of the full Commission. The Commission has an Executive Committee, along with three standing committees: Personnel, Financial Planning, and Nominating.

Map 1: Location Map, Bay-Lake Region



Source: Bay-Lake Regional Planning Commission

## **REGIONAL TRANSPORTATION WORK PROGRAM**

Since the mid-1970s, the Bay-Lake Regional Planning Commission (BLRPC), with the support of the Wisconsin Department of Transportation (WisDOT), has provided regional transportation planning in northeastern Wisconsin that focuses on state, regional, and local issues. The following is the Commission's 2015 Regional Transportation Work Program (RTWP)\*.

\*Please note that the information contained in this RTWP is subject to change based on final disposition of the federal transportation reauthorization bill, MAP-21.

### **Funding Source**

The annual RTWP is funded by the Federal Highway Administration (FHWA), the Wisconsin Department of Transportation (WisDOT), and with matching funds from the counties that financially participate in the Bay-Lake Regional Planning Commission.

### **2014 TITLE VI ACCOMPLISHMENTS**

- Commission staff participated in Title VI training conducted by WisDOT in Fond du Lac in mid-September.
- Commission staff completed the agency's Title VI Program in July. The Title VI Program covers the agency as a whole, including the Commission's RTWP and Sheboygan MPO program. The Commission approved the program at a meeting of its Executive Committee in late July. The adopted final Title VI Program was posted to the Commission's website (under the Sheboygan MPO program section) in late July.
- Commission staff helped facilitate meetings of the Northeast Wisconsin Regional Access to Transportation Committee (NEWRATC) in January, April, July and October; this included preparation of meeting agendas and drafting of meeting minutes. The charge of this committee is "to coordinate and develop a regional committee to systematically address access to transportation for at-risk populations with special needs." Generally, counties covered by the Bay-Lake and East Central Wisconsin RPC regions are represented on this committee.
- Commission staff assisted with outreach efforts with the City of Marinette Transportation Coordination Committee to advocate for the interests of minority and low income populations for the City's Shared Ride Taxi in 2014.
- Commission staff assisted with meetings of the Northeast Wisconsin Transportation Committee (NEWTC) in January and April. The charge of this committee is to coordinate and address access to transportation for at-risk populations with special needs in Oconto and Marinette counties.

### **2015 WORK PROGRAM ACTIVITIES**

#### **1110 Program Administration**

- Prepare and submit monthly invoices and progress reports to the central office of the Wisconsin Department of Transportation, along with the preparation of the *2015 Regional Transportation Work Program*.
- **Participation in quarterly FHWA/RPC/WisDOT meetings to discuss transportation planning, policy, financial, and technical issues and questions.**



## **1120 Public Participation**

- Draft the Regional Transportation section of the Commission's *2014 Annual Report*.
- Write updates to the Commission's Monthly Activity Reports provided to member counties and municipalities.
- Provide transportation-related articles for the Commission's monthly E-newsletters.
- Participate in and provide assistance to WisDOT staff, as requested, in the planning, coordinating and hosting of public forums and meetings associated with ongoing state transportation planning efforts.

## **1130 Regional Transportation Planning**

### 1131 Transportation and Economic Development Planning

- Collect and analyze transportation information and data for inclusion in the Commission's *2012 Comprehensive Economic Development Strategy (CEDS)* for the 2015 update.
- **Provide assistance as requested by WisDOT staff to coordinate regional transportation and economic development studies, especially for TEA-eligible projects and assisting local communities in the application process.**
- **Assist WisDOT and local officials, as requested, related to the economic, social, environmental, and land use impacts of proposed community bypass facilities in the region.**

### 1132 Regional Comprehensive Plan-Transportation Element

- Maintain an inventory of all major transportation facilities (airports, commercial shipping ports and recreational boating facilities, rail facilities, and bicycle/recreational trails); public transit; transportation for the elderly and disabled; and intermodal facilities within the region as part of the *Bay-Lake 2030 Regional Comprehensive Plan*. This inventory will be updated as needed to support the Commission's other five program areas.

### 1133 Bicycle and Pedestrian Planning

- Provide technical assistance to counties and local units of government seeking to implement the bicycle facility planning recommendations within their respective comprehensive plans.
- Update the region's existing bicycle transportation facility inventory.
- Assist Sheboygan County, as requested, with implementation of its Non-Motorized Transportation Pilot Program (NMTTP) to improve bicycle and pedestrian transportation facilities.
- **Spearhead development of countywide or sub-regional bikeway facility and suitability plans, as requested.**

### 1134 Railroad Planning

- Monitor the regional impacts of local rail acquisition proceedings, rail abandonment proceedings, and other related rail activities.

- Assist, as requested, with planning and public outreach relative to the Northwoods Rail Study.
- Participate in meetings that encourage the maintenance and expansion of rail lines and services in the region.

#### 1135 Corridor Planning and Environmental Feasibility Studies

- Prepare, as requested, highway corridor overlay “zoning” plans for those communities located adjacent to major highways.
- **Participate in statewide and regional major corridor planning and environmental feasibility studies as coordinated by WisDOT.**

#### 1136 Airport Planning

- Review and comment on the expansion and development of existing public and private airports.

#### 1137 Port and Harbor Planning

- Conduct studies for the region’s smaller port communities, including the cities of Marinette and Manitowoc, as requested.
- Update the Port, Harbor and Recreational Marina Study for the Bay-Lake Region, as needed.

### **1140 Specialized Transportation Planning**

#### 1141 Specialized Transportation Planning

- Assist public and special transportation service providers with review of Wisconsin Department of Transportation Section 85.21 grant applications for financial assistance that supports elderly and disabled transportation in the Bay-Lake Region, as requested.
- Assist WisDOT with the review of Section 5310 grant applications, as requested. The Section 5310 - Enhanced Mobility of Seniors and Individuals with Disabilities program is a federal/state grant program providing 80 percent of the cost to purchase vehicles for the transportation of elderly and disabled populations.

#### 1142 Transit Planning

- Assist public transportation service providers with review of Wisconsin Department of Transportation (Section 85.20) and Federal Transit Administration – Rural Area Formula (Section 5311) grant applications for financial assistance to develop and operate public transit services, as requested.
- Assist member counties with development of projects funded through Federal Transit Administration Section 5310 projects.
- Continue to assist the City of Marinette with the administration of the city’s Shared-Ride Taxi Program.
- Prepare and submit the City of Marinette’s 2016 application for State Aid (Section 85.20) and Federal Aid (Section 5311) for operation of the City’s Shared-Ride Taxi transit services.

#### 1143 Special Transportation Services Planning

- Assist counties and communities with coordination, planning, and implementation of elderly and disabled special transportation services and programs.
- Provide assistance to communities making application for grants for capital improvements, equipment and operating expenses, as requested.
- Continue to facilitate meetings of the *Northeastern Wisconsin Regional Access to Transportation Committee* (in cooperation with staff of the East Central Wisconsin Regional Planning Commission) for the purpose of coordinating and developing a regional committee to systematically address access to transportation for at-risk populations with special needs.

## **1150 Local Assistance**

### *1151 Community Transportation Planning*

- **Assist in the oversight/development, as requested, of transportation and land use elements for regional, county, and local comprehensive plan updates pursuant to s. 66.1001, Wis. Stats.**
- Assist with zoning ordinances to implement county and local comprehensive plans, as requested.
- **Provide technical advice and guidance in conducting air quality planning for rural, isolated non-attainment counties for regional emissions and conformity analyses, where applicable.**
- **Assist communities with Transportation Alternatives Program activities (formerly Safe Routes to School) as requested, including preparation of plans and/or the administration of program funds.**

### *1152 Pavement Management Surveys*

- Assist communities with road pavement surveys and data submittal utilizing PASERWARE Pavement Management Software, as requested.
- Provide training on pavement surveys and PASERWARE, as requested, in cases where communities will conduct their own inventories.

### *1153 Grant Writing*

- Assist local communities with the preparation and submittal of applications for Transportation Economic Assistance (TEA); Transportation Alternatives grants; Enhanced Mobility of Seniors and Individuals with Disabilities (Section 5310) grants; Section 5311-Rural Area Formula grants; and other transportation related grants.
- Provide review services, data, and letters of support to communities and organizations requesting transportation funding provided through state and federal programs.

**1160 State and Federal Assistance and Coordination**

1161 Technical and Policy Advisory Committees

- Facilitate and/or participate in advisory committees that address various modes of transportation.

1163 Implementation of State Transportation Plans

- Review and comment on state transportation planning activities, as requested.
- Assist WisDOT staff with the implementation of *Connections 2030*, Wisconsin’s long-range transportation plan.
- Provide assistance to WisDOT staff on the State Rail Plan / Freight Plan.
- Disseminate State transportation plan components to local units of government through newsletters, mailings, and social media.
- Assist WisDOT staff by providing input on the functional classification system.

1164 Monitor State and Federal Legislation

- Continue to monitor and review pertinent transportation-related regulatory changes and responsibilities derived from the 1990 Clean Air Act Amendments; the Americans with Disabilities Act of 1990; and the *Moving Ahead for Progress in the 21st Century Act* (MAP-21).
- Coordinate and assist with the establishment of performance measures and targets under MAP-21.

1165 Workshops and Meetings

- Participate in meetings and workshops with local officials, staff and other interested parties representing state, regional, county, and community transportation interests.
- Present ongoing work program progress and project reports to the Commissioners as appropriate. (See Table 1)
- Attend statewide transportation planners’ meetings and workshops.
- Facilitate coordination of transportation planning activities with other RPCs, WisDOT’s Northeast and North Central Regions, and with county planning agencies within the region.

Table 1: Bay-Lake RPC - Tentative Meeting Dates - 2015

Meeting	Jan.	Feb.	Mar.	Apr.	May	June	July	Aug.	Sept.	Oct.	Nov.	Dec.
<i>Bay-Lake RPC - Full Commission</i>			13 <sup>th</sup>			12 <sup>th</sup>			11 <sup>th</sup>			11 <sup>th</sup>
<i>Bay-Lake RPC - Executive Committee</i>	30 <sup>th</sup>			24 <sup>th</sup>			31 <sup>st</sup>			30 <sup>th</sup>		

## **PROGRAM SCHEDULE**

Table 2 outlines the schedule of program activities and anticipated or tentative completion dates for specific elements of the Regional Transportation Work Program for 2015.

Table 2: Regional Transportation Work Program Schedule – 2015

Activity	Jan	Feb.	Mar	Apr.	May	Jun.	Jul.	Aug.	Sep.	Oct.	Nov.	Dec.
<b>PROGRAM ADMINISTRATION</b>												
Quarterly Invoices and Progress Reports	X	X	X	X	X	X	X	X	X	X	X	X
<b>PUBLIC PARTICIPATION</b>												
Prepare Transportation Element for Annual Report				X								
Submit Transportation Articles for E-Newsletters	X	X	X	X	X	X	X	X	X	X	X	X
Attend Wisconsin Regional Transportation Planning Conferences									X			
<b>REGIONAL TRANSPORTATION PLANNING</b>												
Regional Comprehensive Plan – Transportation Element Update	X	X	X	X	-	-	-	-	-	X	X	-
Transportation and Economic Development Planning	-	-	-	-	-	-	X	X	-	-	-	-
Bicycle and Pedestrian Transportation Planning	-	-	-	-	-	-	-	-	-	-	-	-
Update Regional Bicycle Plan Inventory												
Railroad Planning	-	-	-	-	-	-	-	-	-	-	-	-
Corridor Planning and Environmental Feasibility Studies	-	-	-	-	-	-	-	-	-	-	-	-
Airport Planning	-	-	-	-	-	-	-	-	-	-	-	-
Port and Harbor Planning	-	-	-	-	-	-	-	-	-	-	-	-
<b>SPECIALIZED TRANSPORTATION PLANNING</b>												
Development and Review of Section 85.21/5310 Applications									X	X	X	X
Transit Planning		X		X		X		X		X		X
City of Marinette Shared-Ride Taxi 85.20 Application								X	X	X	X	X
City of Marinette Shared-Ride Taxi Program Administration	X			X			X			X		
Special Transportation Services Planning	-	-	-	-	-	-	-	-	-	X	X	-
<b>LOCAL ASSISTANCE</b>	-	-	-	-	-	-	-	-	-	-	-	-
Community Transportation Planning	-	-	-	-	-	-	-	-	-	-	-	-
Pavement Management Planning	-	-	-	-	-	X	X	X	X	X	X	X
Transportation Grant Writing	-	-	-	-	-	-	-	-	-	-	-	-
<b>STATE/FEDERAL ASSISTANCE AND COORDINATION</b>												
Technical and Policy Advisory Committees	X			X			X			X		
Implementation of State Transportation Plans	-	-	-	-	-	-	-	-	-	-	-	-
Monitor State and Federal Legislation	-	-	-	-	-	-	-	-	-	-	-	-
Workshops and Meetings	-	-	-	-	-	-	-	-	-	-	-	-

(X) Work Program Elements and Activities Conducted Within an Anticipated Timeframe.

(-) Ongoing Work Program Elements and Activities and Activities That Do Not Have a Specified Schedule.

**BAY-LAKE REGIONAL PLANNING COMMISSION  
STAFF CONTACTS**

425 South Adams Street, Suite 201  
Green Bay, WI 54301  
ph: (920) 448-2820 - fx: (920) 448-2823

**Richard L. Heath**

**Executive Director**

[rheath@baylakerpc.org](mailto:rheath@baylakerpc.org)

Administration, Project Development, Community Planning, Economic Development

**Jeffrey C. Agee-Aguayo**

**Transportation Planner**

[jagee@baylakerpc.org](mailto:jagee@baylakerpc.org)

Sheboygan MPO Transportation Planning, Regional Transportation

**Brandon G. Robinson**

**Community Assistance Planner**

[brobinson@baylakerpc.org](mailto:brobinson@baylakerpc.org)

Community Planning and Zoning, Regional Transportation, Grant Writing and Administration

**Angela M. Pierce**

**Natural Resources Planner**

[apierce@baylakerpc.org](mailto:apierce@baylakerpc.org)

Natural Resources, Coastal Planning, Community Planning, Grant Writing and Administration, Sewer Service Area Planning and Plan Amendments, Hazard Mitigation Planning

**Joshua W. Schedler**

**GIS Coordinator**

[jschedler@baylakerpc.org](mailto:jschedler@baylakerpc.org)

GIS Data Analysis, Mapping

**Richard J. Malone**

**Office Accounts Coordinator**

[rmalone@baylakerpc.org](mailto:rmalone@baylakerpc.org)

Bookkeeping, Account Management

