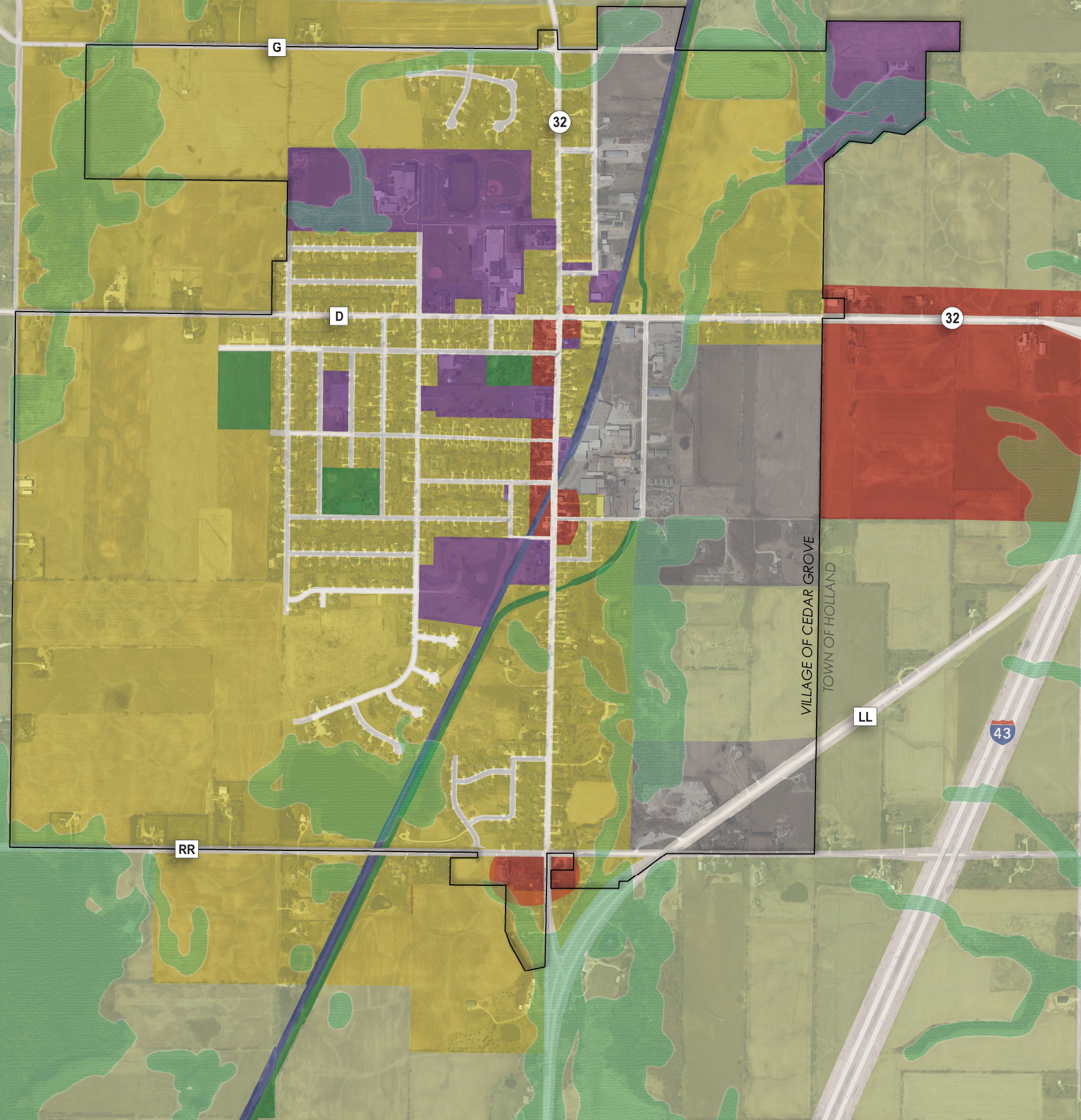


# VILLAGE OF CEDAR GROVE 20-YEAR LAND USE PLAN



## Future Land Use Categories

- Residential
- Commercial/Business
- Manufacturing
- Governmental/Institutional
- Park and Recreation
- Transportation
- Agricultural/Woodlands
- Environmental Corridors



0 500 1,000 2,000  
Feet

Sources: ESRI National Geographic Basemap; FEMA, 2009; NRCS, 2010; WDNR, 2009, 2019; Sheboygan County, 2019; Bay-Lake RPC 2021.

Disclaimer: This map is neither a legally recorded map nor a survey and is not intended to be used as one. This drawing is a compilation of records, information, and data used for reference purposes only. Bay-Lake RPC is not responsible for any inaccuracies herein contained.