

Providing opportunities
and cooperative solutions
to foster healthy and
thriving communities
within the region.

An Economic Development
District serving Northeast
Wisconsin for over 40 years.



IN THIS ISSUE

Phragmites Management
Project Update

Wisconsin RPCs and DNR
Emerald Ash Borer (EAB)
Impacts Mitigation Grants

GIS Mapping Highlight

Sheboygan MPO Update

Upcoming Events/Meetings

Available Grants

CONTACT US

(920) 448-2820

425 S. Adams St. Ste. 201
Green Bay, WI 54301

www.baylakerpc.org



E-NEWSLETTER VOLUME 6, ISSUE 8 / AUGUST 2016

Phragmites Management Project Update: Treatments Underway

Under funding from GLRI, the Commission has mapped nearly 800 acres of non-native Phragmites in Lower Green Bay from Duck Creek to Point au Sable; along the Fox River to De Pere dam; along the East River in Allouez/Bellevue, and along the lower reaches of Duck and Baird Creeks. These areas are now being targeted for management. Sites include a mix of coastal wetlands, shoreline and riparian areas, roadsides, parks and trails, private residences, and commercial and industrial properties.

Management will include chemical application of an aquatic-approved formulation containing the herbicide imazapyr, followed by mowing in late fall or winter (where feasible). Progress will be variable depending upon favorable weather conditions (i.e., no rain and minimal winds), density of treatment areas, and equipment available.

Following review of proposals received during the bid process, three experienced firms were selected to conduct the management activities within the project area, as follows:

- Applied Ecological Services- approximately 400 acres in west Green Bay and Village of Howard (west of the Fox River, north of I43 and east of I41), and Renard Island
- Nature Care Ecological Consulting & Services- approximately 270 acres in west Green Bay and Village of Howard (west of Fox River, south of I43, west of I41), east Green Bay shoreline, Baird Creek corridor, and Town of Scott shoreline
- Wildlife and Wetlands Solutions- approximately 100 acres in Villages of Allouez, Ashwaubenon, Bellevue, and City of De Pere along the Fox and East Rivers

For more information about the Bay-Lake RPC Phragmites project, contact [Angela Kowalzek-Adrians](#) or [Amy Carrozzino-Lyon](#). The Phragmites Information Hotline (920-430-0220) will be regularly updated with a recorded message about treatment schedule and progress.

STAFF

Cindy J. Wojtczak

Executive Director

cwojtczak@baylakerpc.org

Jeffrey C. Agee-Aguayo

Transportation Planner

jagee@baylakerpc.org

Amy Carrozzino-Lyon

Phragmites Project

Coordinator

AmyCL@baylakerpc.org

Angela Kowalzek-Adrians

Natural Resources Planner

AngelaKA@baylakerpc.org

Richard J. Malone

Office Accounts Coordinator

rmalone@baylakerpc.org

Brandon G. Robinson

Community Assistance

Planner

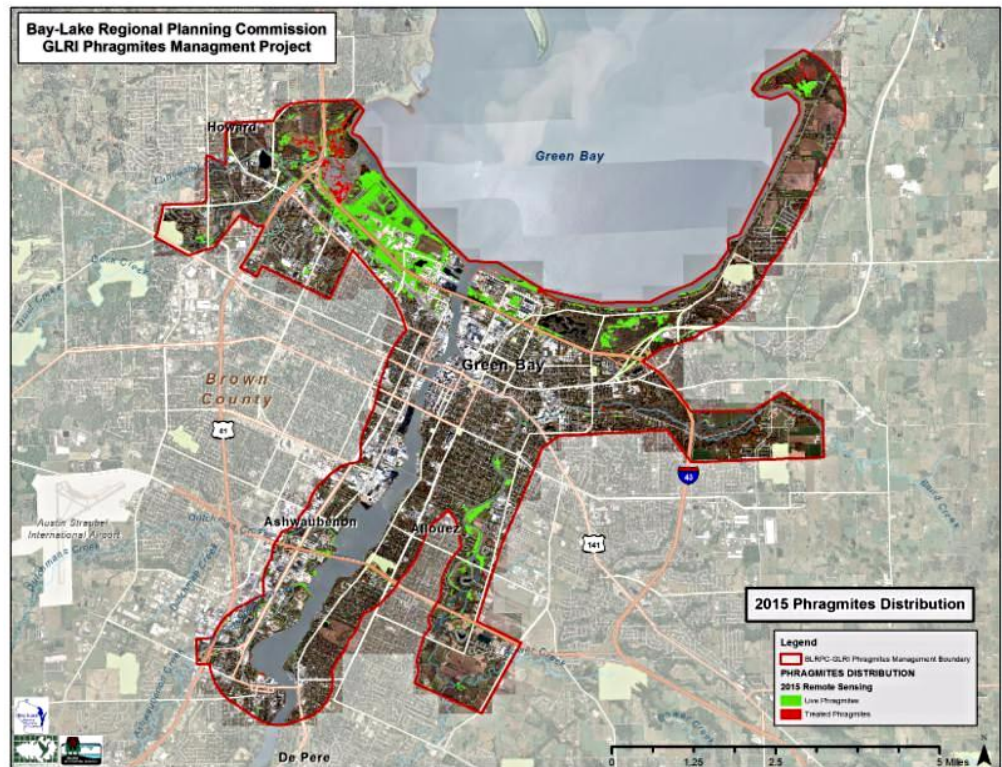
brobinson@baylakerpc.org

Joshua W. Schedler

GIS Coordinator

jschedler@baylakerpc.org

BROCHURE



In the news!

WLUK Fox 11 (8/23/2016): [Phragmites to be sprayed in Green Bay area](#) by Eric Peterson

Green Bay Press-Gazette (7/26/2016): [Green Bay is 'ground zero' for invasive reeds](#) by Adam Rodewald

Wisconsin RPCs and DNR Emerald Ash Borer (EAB) Impacts Mitigation Grants

In partnership with the Wisconsin DNR, East Central Wisconsin RPC, Northwest Wisconsin RPC, and Southeastern Wisconsin RPC, the Bay-Lake Regional Planning Commission has funding available to help communities mitigate the impacts of Emerald Ash Borer (EAB) and prepare them for EAB invasion by diversifying their urban and community forests. The funding will help Wisconsin municipalities, counties and tribes to plant non-host trees within EAB-quarantined counties within the Great Lakes Basin.

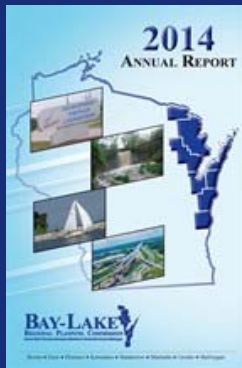
We received 43 grant applications. About half of them come from southeastern Wisconsin, with the remainder coming from the Bay-Lake and East Central Wisconsin regions, as well as one from Northwest Wisconsin. A total of \$568,370 is being requested (of \$82,000 available), with individual funding requests ranging from \$2,000 to \$20,000. The funding is made available through a FY2015 U.S. Forest Service Great Lakes Restoration Initiative grant received by the Bay-Lake Regional Planning Commission earlier this year.



EAB on a penny

For additional information, contact [Angela Kowalzek-Adrians](#).

ANNUAL REPORT



QUARTERLY ACTIVITY REPORT

To submit a request for an
EMSI Developer Query,
please complete and submit
this form:

EMSI Request Form



GIS Mapping Highlight

The Bay-Lake Regional Planning Commission is excited to offer a new sign inventory mapping project option for our communities. Sign inventory mapping is an important component of the MUTCD (Manual on Uniform Traffic Control Devices), allowing your community to be more organized during its inventory or update process. Contact the Commission's GIS Department if your community is in need of a full inventory, an update to the inventory, or a streamlined online mapping option.



These are just a few of the many custom mapping projects in which the Commission can assist communities. Other map examples would include a location map for a grant application, a large air photo display, a series of maps for public informational meetings, GIS analysis, and others. The Commission's GIS Department will be happy to work with you to meet any of your mapping needs.

If you have any questions or comments, please contact [Joshua Schedler](#).

Sheboygan Metropolitan Planning Organization (MPO)



Commission staff continues to work on the *2016 Public Participation Plan Update* for the MPO. The 30 day public consultation period on the preliminary draft 2016 Public Participation Plan Update ended in early August. A 45 day public comment period on the document will be initiated once the Sheboygan MPO Technical and Policy Advisory Committees release it for public review (likely at their next joint meeting on September 8th).

Commission staff continued preparing the update to the *Sheboygan County Coordinated Public Transit - Human Services Transportation Plan*. Materials for the transportation coordination meeting were mailed out to all invitees in late July, and the transportation coordination meeting was held at the Sheboygan County Aging and Disability Resource Center (ADRC) office on August 16th. At this meeting, attendees went through a county coordination assessment exercise, developed a county action plan, and approved various capital projects that can qualify for Section 5310 funding. Commission staff will now finish preparing the draft plan.

The Commission reviewed and approved several minor amendments to the transit capital and elderly and disabled transportation capital components of the *Sheboygan Metropolitan Planning Area Transportation Improvement Program: Calendar Years 2016 - 2019* at a meeting of its Executive Committee in late July. These amendments were transmitted to pertinent state and federal agencies in early August. WisDOT approved the amendments in a letter dated August 10th.

Commission staff is currently in the process of preparing a draft *Sheboygan Metropolitan Planning Area Transportation Improvement Program (TIP): Calendar Years 2017 - 2020*, and is also in the process of preparing a draft *2017 Sheboygan Metropolitan Planning Area Transportation Planning Work Program*. Additional information on these efforts will appear in upcoming newsletters.

Please contact [Jeff Agee-Aguayo](#) for additional information.

Upcoming Events/Meetings

September 6, 2016, 1:30 PM

[WCMP Grant Workshop](#)

Neville Public Museum, Green Bay, WI

September 9, 10:00 - 12:00 PM

Full Commission meeting

Jack Day Center, 90 Bay Beach Road, Green Bay, WI

September 15, 1:30 - 2:30 PM

[DNR Urban Forestry Grant Q&A \(via webinar\)](#)

September 21, 2016, 8:30 - 3:00 PM

[Urban Forestry Workshop: Pest Management with Pollinators in Mind](#)

Ag & Extension Service Center, 1150 Bellevue St, Green Bay, WI

October 20-21, 2016

[WLIA Fall Regional Meeting](#)

Heartwood Resort, Trego, WI

Available Grant Opportunities



The following is a list of upcoming grant opportunities and their due dates. Please contact the [Commission](#) if you have a project idea, or need assistance with preparing or administering a grant, or if you are interested in partnering with the Commission on a project.

- [National Endowment for the Arts Our Town Grants](#), September 12, 2016
- [Urban Innovation Grant](#), September 16, 2016
- [Captain Planet Foundation Educator Grants](#), September 30, 2016
- [ATC Community Tree Planting Program](#), September 30, 2016
- [2017 DNR Urban Forestry Grants](#), October 1, 2015
- [Coastal and Estuarine Land Conservation Program Grants](#), October 10, 2016

[American Honda Foundation](#)

[Ben & Jerry's Foundation Grants](#)

[Charles Stuart Mott Foundation
Environmental Grants](#)

[CN Stronger Communities Fund](#)

[Doris Duke Charitable Foundation](#)

[BayCare Clinic Foundation Grants](#)

[Cedar Tree Foundation Grants](#)

[Cornell Douglas Foundation Grants](#)

[Costco Wholesale Grants](#)

[EcoTech Grants - The Captain Planet
Foundation](#)

[Environmental Research & Education Foundation Grants](#)

[Georgia-Pacific Foundation Grants](#)

[International Paper Grants](#)

[Kinder Morgan Foundation Grants](#)

[Laura Jane Musser Fund](#)

[Lego Children's Fund Grants](#)

[Meetings Mean Business! Grant](#)

[MLB Baseball Tomorrow Fund](#)

[RGK Foundation Education Fund](#)

[US Soccer Foundation Grant](#)

[Wisconsin Humanities Council Grant](#)

[Gannett Foundation Grants](#)

[ING Foundation Grants](#)

[Joint Effort Marketing \(JEM\) Grant](#)

[Kodak American Greenways Grants](#)

[Lawrence Foundation Grants](#)

[MeadWestvaco Foundation Grants](#)

[Mitsubishi Corporation Foundation for the Americas Grants](#)

[Patagonia Environmental Grants](#)

[Rockefeller Family Fund](#)

[Waste Management Charitable Giving](#)

Please contact [Angela Kowalzek-Adrians](#) for any links that are not working properly. Thank you!

