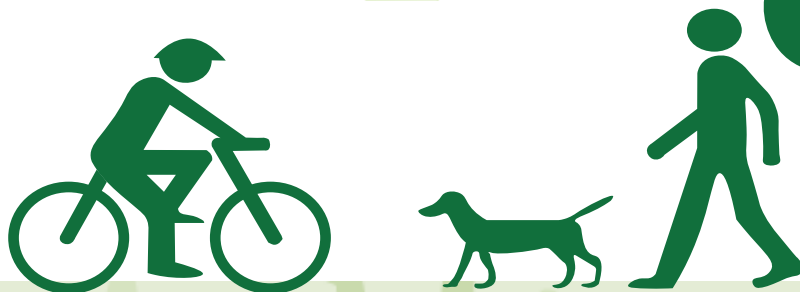


Kewaunee County

OUTDOOR RECREATION PLAN

2021-2025





Parks, Promotion, & Maintenance Committee

Scott Jahnke
Douglas Doell
Nicholas Guilette
Milt Swagel
Jack Wochos



Promotion & Recreation Department

David Myers

Kewaunee County Board
Adoption

December 15, 2020

Bay-Lake Regional Planning Commission

Brandon Robinson
Nicole Barbiaux
Madison Smith



ACKNOWLEDGMENT

Funded in part by the Wisconsin Coastal Management Program and the National Oceanic and Atmospheric Administration, Office for Coastal Management under the Coastal Zone Management Act, Grant #NA19NOS4190087.

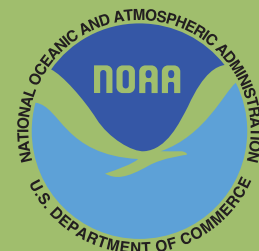


Table of Contents

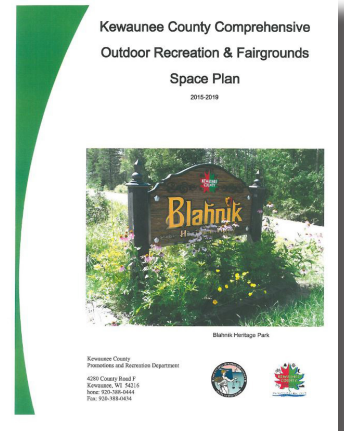
Executive Summary	4
Overview	4
Planning Process	4
Introduction	5
Purpose	5
Goals and Objectives	6
County Characteristics	8
General Planning Area	8
Landscape	8
Water Features	8
Population Characteristics and Projections	9
Economic Impacts	10
Importance of Recreation	11
Recreation Facilities Inventory	12
Kewaunee County Outdoor Recreation Inventory	13
Major Lakes	14
County Parks	16
Recreational Areas	20
County Trails	22
Accessibility	24
ADA Standards	24
Selected Assessment of Accessibility Needs	25
Outdoor Recreation Needs Assessment	28
Recreation Needs Standards	28
State and Regional Recreational Trends and Needs	28
Recreation Capital Improvements, 2021-2025	30
Proposed Improvements Plan	30
Capital Improvements Priority Projects	32
Funding Programs	34
Wisconsin Department of Natural Resources	34
Rural Development Administration (USDA - Rural Development) (RDA)	35

• Executive Summary

Overview

In 1986, Kewaunee County completed the first comprehensive outdoor recreation plan. Since then, the county updated their original plan in 2008, and again in 2015. Each of the updates were used to identify deficiencies in Kewaunee County's existing park system, as well as create a plan for future park enhancement. With each update came improvements such as the establishment of new parks, improvements to the zoo facilities at Bruemmer Park, Ahnapee State Trail, Winter Park Recreation Area, and the Riverview ATV Park. The updates were also instrumental in planning for the spatial needs at the Kewaunee County Fairgrounds located in the Village of Luxemburg.

This plan update was created with a visionary approach and philosophy to guide parks and open space planning in Kewaunee County today and into the future. This outdoor recreation plan considers social planning, environmental sensitivity, public safety, access, and provides recommendations for opportunities to develop new spaces and connectivity throughout Kewaunee County.



Planning Process

One of the first steps in this planning process was to gather data regarding the condition of recreation facilities in the county. Evaluations of the number and condition of equipment and facilities, and accessibility by persons with disabilities were conducted. The results of these inventories were compared with facility standards set by the National Recreation and Park Association (NRPA) to determine where the county may be lacking in recreational facilities or open space park land.

Public Input

An online survey was conducted in 2020 as part of the plan update process to gather feedback from residents, visitors, and various stakeholders regarding their opinions of county facilities and programs. There were a total of 88 responses to the survey. The input was used to determine suggested future needs and recommended improvements to the county's recreation facilities.

- Nearly 65% of respondents enjoy the biking/hiking opportunities that Kewaunee County has to offer. Most people indicated the county's recreation facilities provide for peaceful environments to relax, while also staying fit and healthy.
- Biking, kayaking, and passive recreation (hiking, picnicking, wildlife viewing, or photography) are activities that respondents would like to participate in more frequently.
- Expansion of existing park amenities (restrooms, pavilions, etc.), more trails, public access to water, swimming areas, and more winter recreation activities are some of the features that a majority of respondents would like to see developed in the county.



The Kewaunee County Promotion & Recreation Department staff prepared a list of capital improvements for the five-year planning period of 2021 to 2025. This list is a guide for the county when budgeting and scheduling park improvements. The planned improvements, detailed later in this document, were approved by the Kewaunee County Parks, Promotion & Maintenance Committee.

Purpose

Parks, recreation facilities, and open space are a tremendous asset to the county. They provide leisure time opportunities for residents and visitors. Public open space and recreation facilities are becoming an increasingly important investment for both municipalities and residents. Parks, recreation, and open space facilities often represent the image and perception of a region. The provision and adequate supply of areas and activities to accommodate the needs of the public has been proven to promote the general health, welfare, and safety of our communities and citizens. Over the years, the public's desire for recreation and open space has continued to grow in such a manner that local communities across the world need to continue to provide park, open space, and recreational opportunities to their citizens. To assure that these services are provided in an efficient and effective manner, planning principles should be included as an important element of outdoor recreation and open space programs.

Adoption of this plan by the county will provide eligibility for Land & Water Conservation Fund (LWCF) and other funds available through the Wisconsin DNR Stewardship Program.



• Goals and Objectives

The following goals and objectives provide guidance to county staff and officials in their decision-making process with regard to open space and recreation matters. The goals set forth in this plan reflect the county's intentions to provide quality park, recreation, and open space opportunities to its citizens and visitors.

Goal 1:

To provide quality active and passive outdoor recreational opportunities of various kinds for the residents of Kewaunee County and visitors to the area, now and in the future.

Objectives:

- Make improvements to existing recreational facilities where necessary.
- Coordinate public park improvements which complement and enhance other land uses.
- Provide a variety of recreational facilities and activities for all ages.
- Develop programming/education for nature/environmental based classes.
- Develop a plan of action to meet the recreational demands of the public waters where demands are not currently being met.
- Maximize public access to the county's inland waters, Lake Michigan, and Green Bay.
- Avoid duplication of recreational services between the different levels of government and also between the county and the private sector.
- Determine new uses for under-utilized parks and recreational areas within the existing park system.

Goal 2:

To preserve and protect Kewaunee County's natural resources and open spaces for the enjoyment of present residents and future generations.

Objectives:

- Identify and preserve sites with environmental, scientific, historic, or archaeological significance.
- Encourage conservation practices that improve the quality of the land and water.
- Preserve wetlands in their natural state in areas where appropriate and conserve soil, water and forest resources.
- Work with the county's Land & Water Conservation Department to implement the county's invasive species management plan.
- Identify and evaluate under-utilized facilities for possible non-recreational uses.
- Monitor State and Federal grant programs for future park development. Apply for funds, if appropriate.
- Encourage public/private partnerships during facility and program development.

Goal 3:

To prevent the overcrowding of land and water based recreational facilities in the county and to accommodate population increases.

Objectives:

- Provide adequate recreational facilities throughout the county that are readily accessible to major portions of its population.
- Locate future parks so that they are accessible to the population in all parts of the county.
- Identify and preserve suitable areas for future park and recreation purposes.

Goal 4:

Plan new outdoor recreation facilities that accommodate public recreation needs, while recognizing the rights of private property owners, the need for safety, and the requirements of environmental protection.

Objectives:

- Notify and coordinate with affected landowners during park design and future improvements to incorporate measures into the overall design to accommodate their concerns, to the extent possible, the privacy and security concerns of the landowner.
- Expand existing sanitary facilities to a level that provides the needed services during special occasions at the parks.
- Encourage the use of publicly-owned property to meet the needs of outdoor recreation.

• County Characteristics



General Planning Area

Kewaunee County encompasses approximately 331 square miles and contains 14 municipalities (two cities, two villages and 10 towns). The majority of the county's population resides in the urban centers of Algoma, Kewaunee and Luxemburg. Located on the shores of Lake Michigan and Green Bay, in addition to its close proximity to Door County, City of Green Bay, and the Fox Cities, creates a favorable business and recreational environment for Kewaunee County.

Landscape

The majority of the county is classified as undeveloped, while existing development covers just over seven percent of the county. Kewaunee County's rural landscape is generally flat to gently rolling and is dominated by agricultural uses and natural features.

- Croplands/pasture make-up nearly 63 percent of the county's total land area.
- Woodlands makeup the second largest land use in the county covering over 21 percent of the county. Some of the larger woodland areas in the county include the Black Ash Swamp in the Town of Lincoln, Duvall Swamp in Red River, and Lipsky Swamp in the Town of West Kewaunee.
- Land with significant slope include the areas carved out by the Kewaunee River as well as the shoreline that continues to be defined by the affects of Lake Michigan.
- Together, residential development and the transportation network comprise nearly 59 percent of the developed land uses in Kewaunee County. Kewaunee County's primary highways include State Highways 29, 42, 54, and 57.
- State-owned lands make up roughly 3,220 acres of Kewaunee County, whereas county-owned land accounts for over 900 acres.
- With a continental climate type, the county can experience an extreme disparity between summer and winter temperatures, including cold, snowy winters and warm summers with periods of hot, humid conditions.

Water Features

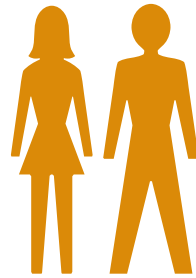
Kewaunee County is home to numerous water resources that provides residents and visitors with an abundance of fish, wildlife, recreational activities, and aesthetic qualities. Map 1 of this plan identifies the major water resources in the county.

- The county contains approximately 30 miles of Lake Michigan shoreline and three miles of Green Bay shoreline.
- Approximately 140 miles of streams flow within the county boundaries. According to the WDNR, about 100 miles of these streams are perennial streams that maintain a small continuous flow throughout the year. The Kewaunee River and the Ahnapee River are the major rivers that meander through the county.
- Kewaunee County has a total of 15 inland lakes or water resources. Five of these sites have public boat launching facilities (East Alaska Lake, West Alaska Lake, Krohn's Lake, Shea's Lake and Heidmann Lake). In addition to fishing and boating, these parks can also provide recreational opportunities such as viewing nature, bird watching, and other passive recreational uses.

Population Characteristics and Projections

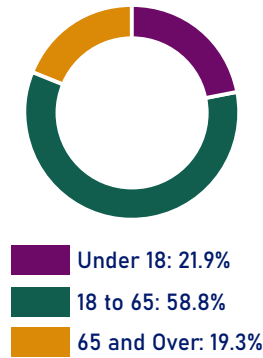
The US Census 2018 ACS 5-Year Estimates provides a snapshot of Kewaunee County's current population. In addition, the WDOA population projections offer a glimpse of what the county's population may be by the year 2040. Population projections are an important factor necessary to assess the area's future need for housing, community facilities, transportation, and recreation-related facilities.

2018 Population:
20,360

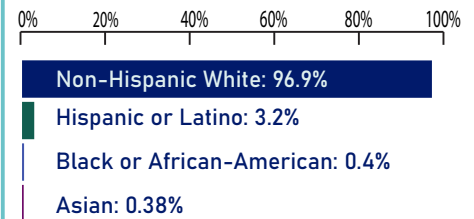


Female: 49.5%
Male: 50.5%

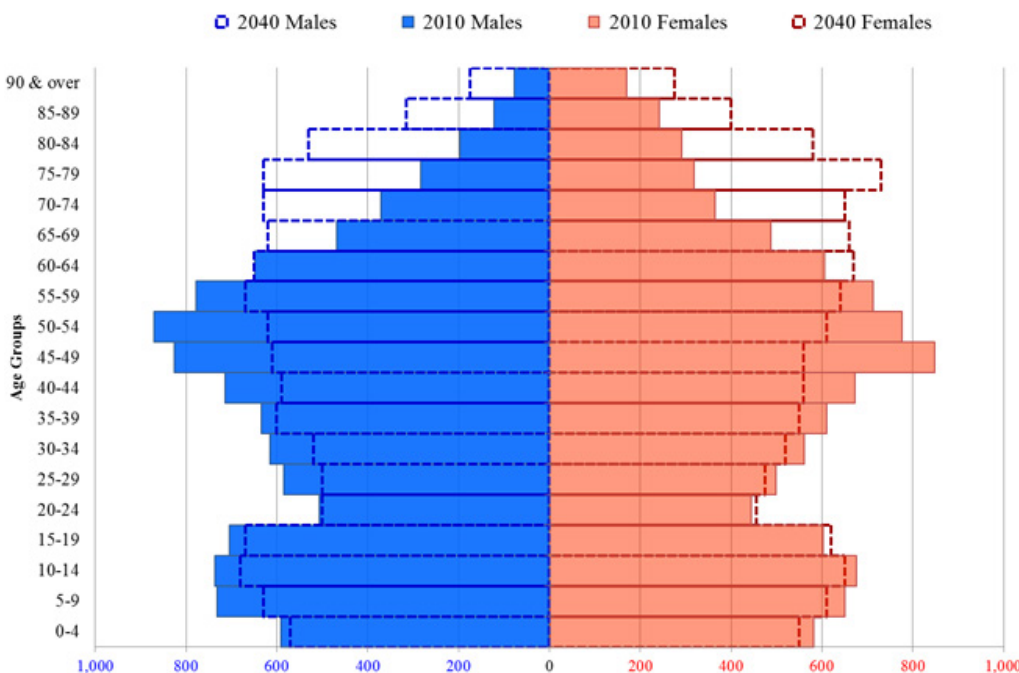
2018 Population
By Age Group



2018 Population By Race



2015 Population and Future Projections



The Age Group Projection Pyramid details Kewaunee County's age groups by gender while also illustrating how those age groups are projected to change from 2010 to 2040.



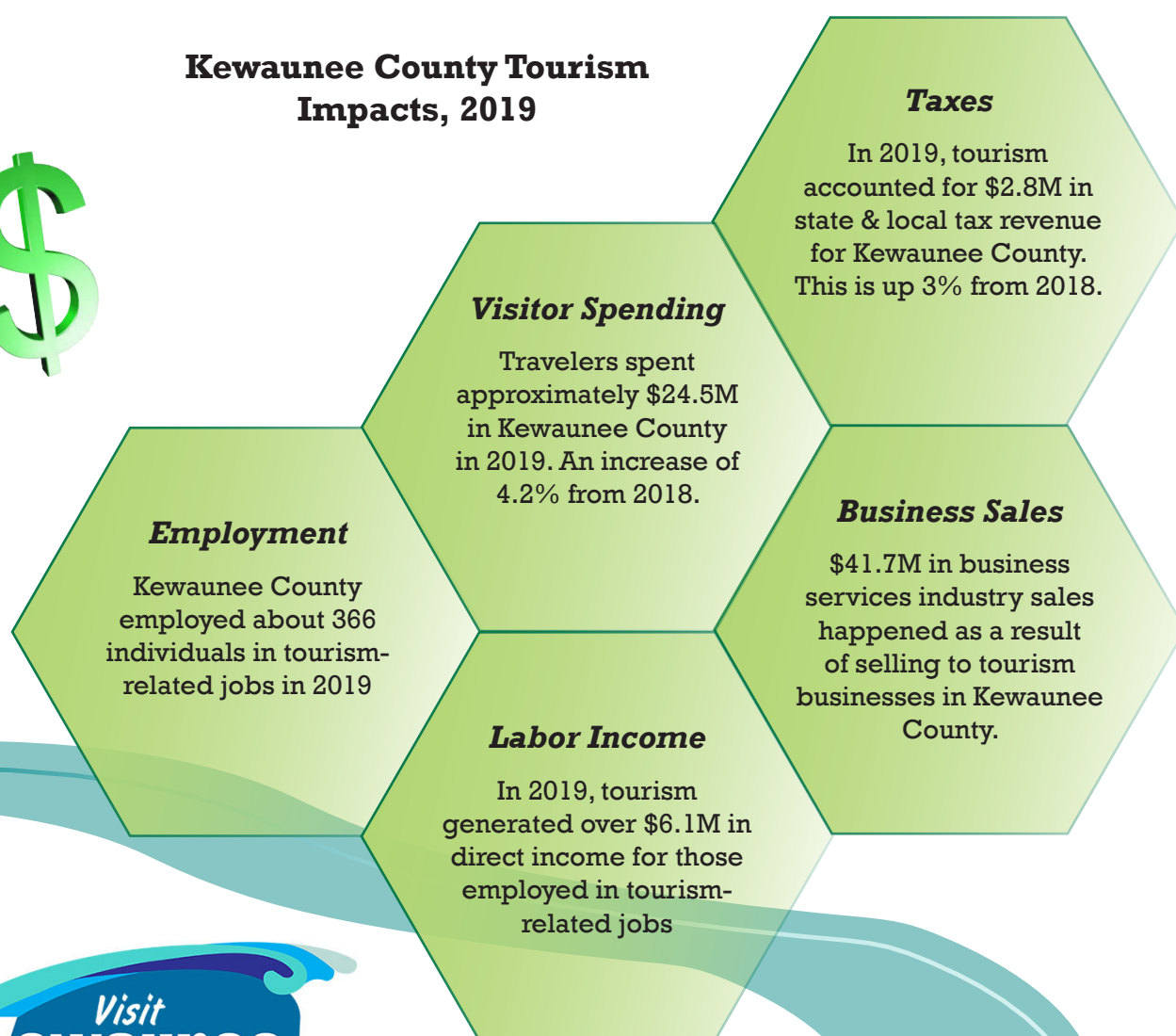
• County Characteristics

Economic Impacts

Tourism is an important economic driver for municipalities and counties. It generates millions in tax receipts, and its broad range of employment provides jobs that support a community's economic health. By measuring and monitoring this impact, Kewaunee County can make informed decisions on funding, marketing, and also carefully analyze trends, successes and future needs.

The tourism industry capitalizes on the views, amenities, and variety of recreational opportunities available to visitors. Kewaunee County understands that outdoor recreation supports a high quality of life while also attracting and sustaining employers and families. Investing in outdoor infrastructure attracts employers and active workforces ensuring those communities thrive economically and socially.

Kewaunee County Tourism Impacts, 2019



Source: Wisconsin Dept. of Tourism, 2020



"The Good Life on a Great Lake"

Importance of Recreation

As indicated in the 2020 online survey of residents, visitors, and various stakeholders, most individuals indicated that Kewaunee County's recreation facilities provide for peaceful environments to relax, while also staying fit and healthy. Many other responses cited that the parks provided opportunities for social gatherings. In addition to the aforementioned benefits, the following provides a general summary of why continued maintenance and improvements to the Kewaunee County parks and recreation facilities are of great importance.

Social Importance

- Parks are a tangible reflection of the quality of life in a community. They provide identity for citizens and are a major factor in the perception of quality of life in a given community. Parks and recreation services are often cited as one of the most important factors in surveys of the livability of communities.
- Parks provide gathering places for families and social groups, as well as for individuals of all ages and economic status, regardless of their ability to pay for access.
- Parks and recreation programs provide places for health and well-being that are accessible by persons of all ages and abilities, especially to those with disabilities.
- Access to parks and recreation opportunities has been strongly linked to reductions in crime and to reduced juvenile delinquency.
- Parks have a value to communities that transcend the amount of dollars invested or the revenues gained from fees. Parks provide a sense of public pride and cohesion to every community.



Health and Environmental Benefits

- Parks and recreation facilities are the places that people go to get healthy and stay fit.
- According to studies by the Centers for Disease Control and Prevention, creating, improving and promoting places to be physically active can improve individual and community health and result in a 25 percent increase of residents who exercise at least three times per week.
- A study by Penn State University showed significant correlations to reductions in stress, lowered blood pressure, and perceived physical health to the length of stay in visits to parks.
- Parks and protected public lands are proven to improve water quality, protect groundwater, prevent flooding, improve the quality of the air we breathe, provide vegetative buffers to development, produce habitat for wildlife, and provide a place for children and families to connect with nature and recreate outdoors together.

Economic Value

- Parks improve the local tax base and increase property values.
- Quality parks and recreation are one of the top three reasons that business cite in relocation decisions.
- Parks and recreation generate money for the local economy.

- Recreation Facilities Inventory



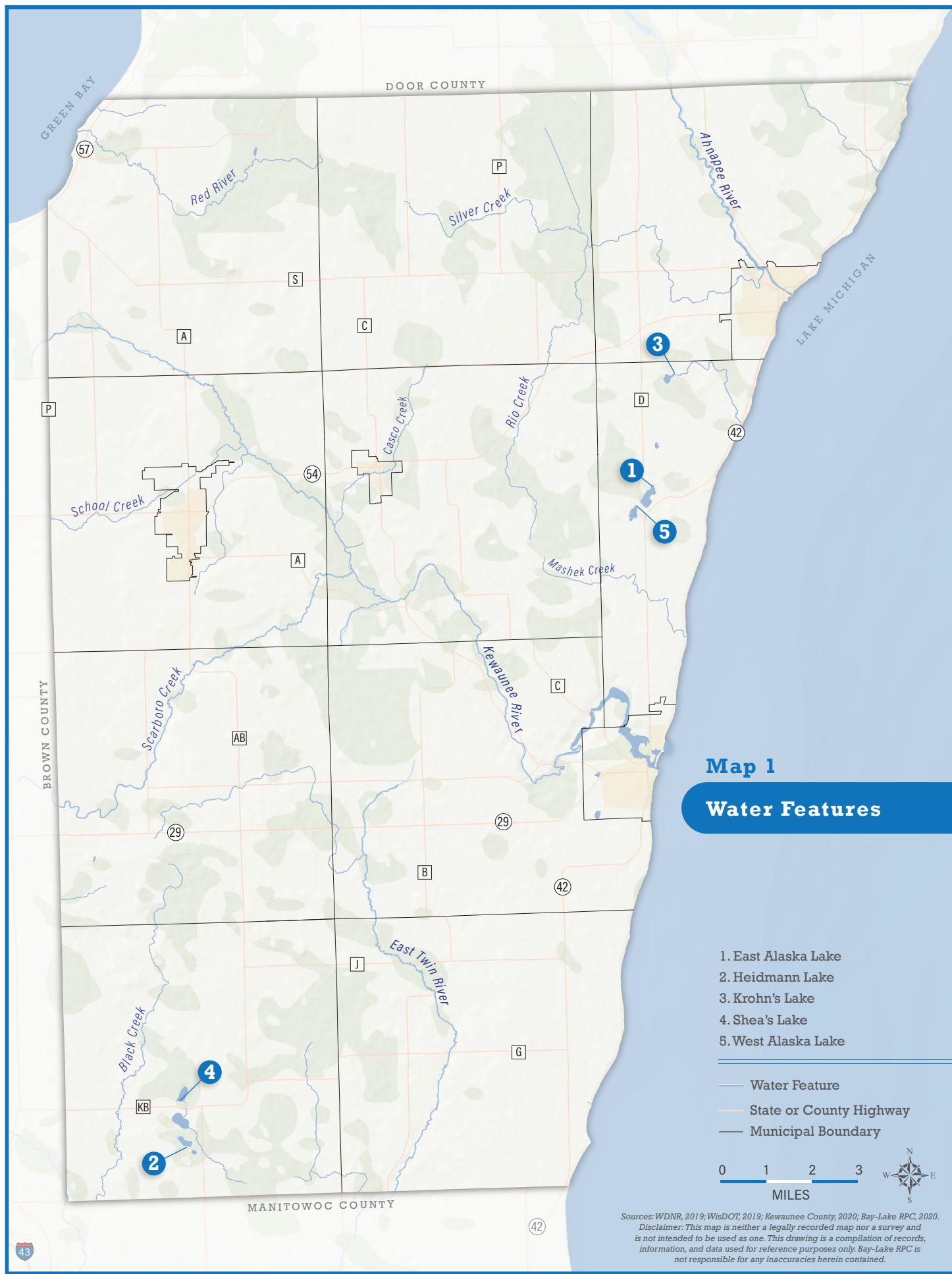
Kewaunee County Outdoor Recreation Inventory

The following section of this plan contains a list and description of the major water features, county parks and other recreation facilities, and trails found throughout Kewaunee County.



Major Lakes

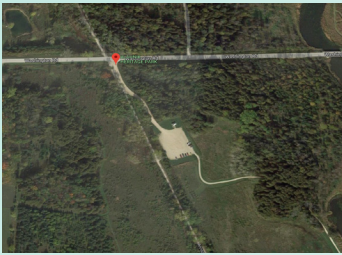
1. East Alaska Lake		E5335 7th Road, Algoma, WI 54201
	<div data-bbox="462 136 527 409">AMENITIES</div> <ul style="list-style-type: none"> • 1 Boat Launch • 1 Boarding Dock • 1 Park Kiosk • 1 Port-a-Potty • 1 Trash Bin • 1 Educational Sign • 53 Acre Lake 	<ul style="list-style-type: none"> • Asphalt Parking Area 5 Vehicle/Boat Trailer Stalls • Parking Along Park Roads
2. Heidmann Lake		E1160 Bolt Road, Denmark, WI 54208
	<div data-bbox="462 508 527 781">AMENITIES</div> <ul style="list-style-type: none"> • 1 Park Kiosk & Identification Sign • 2 Picnic Tables • 2 Grills • 1 Trash Bin • Split-Rail Fence • 1 Boat Launch • 1 Boarding Dock 	<ul style="list-style-type: none"> • 1 Port-a-Potty • 24-Acre Lake (Electric Motors Only) • Off-Road Parking 2 Vehicle Stalls 5 Vehicle/Boat Trailer Stalls
3. Krohn's Lake		N7217 Co Rd KK, Algoma, WI 54201
	<div data-bbox="462 879 527 1152">AMENITIES</div> <ul style="list-style-type: none"> • 1 Park Kiosk & Identification Sign • 1 Restroom Building • 4 Picnic Tables • 2 Grills • 3 Trash Bins • Split-Rail Fence • 1 Boat Launch 	<ul style="list-style-type: none"> • 1 Boarding Dock • 1 Fishing Dock • 1 Swimming Raft • 1 Walking Bridge • 21 Acre Lake (Electric Motors Only) • Gravel Parking Area 30 Vehicle Stalls 10 Vehicle/Boat Trailer Stalls
4. Shea's Lake		E1102 Co Rd KB, Denmark, WI 54208
	<div data-bbox="462 1251 527 1524">AMENITIES</div> <ul style="list-style-type: none"> • 1 Park Kiosk & Identification Sign • 1 Grill • 2 Picnic Tables • 1 Port-a-Potty • 1 Trash Bin • Split-Rail Fence • 1 Boat Launch 	<ul style="list-style-type: none"> • 1 Boarding Dock • 32 Acre Lake (Electric Motors Only) • Off-Road Gravel Parking 8 Vehicle Stalls 5 Vehicle/Boat Trailer Stalls
5. West Alaska Lake		N6077 Co Rd D, Algoma, WI 54201
	<div data-bbox="462 1623 527 1896">AMENITIES</div> <ul style="list-style-type: none"> • 1 Park Kiosk & Identification Sign • 1 Restroom Building • 3 Picnic Tables • 2 Grills • 3 Trash Bins • 1 Boat Launch • 1 Boarding Dock 	<ul style="list-style-type: none"> • 20 Acre Lake (Electric Motors Only) • Gravel Parking Area 30 Vehicle Stalls 20 Vehicle/Boat Trailer Stalls



County Parks

1. Blahnik Heritage Park

E5843 Washington Rd, Algoma, WI 54201



AMENITIES

- 1 Park Identification Sign
- 1 Restroom Building
- 5 Picnic Tables
- 2 Grills
- 3 Trash Bins
- 1 Handicap Fishing Pier
- 1 Horse Coral
- Trail Head to Ahnapee State Trail
- Gravel Parking Area
75 Vehicle Stalls



2. Bruemmer Park Zoo

E4280 Co Rd F, Kewaunee, WI 54216



AMENITIES

- 2 Park Identification Signs
- 1 Restroom Building
- 30 Picnic Tables
- 7 Grills
- 3 Benches
- 14 Trash Bins
- 1 Water Drinking Fountain
- 7 Overhead Dawn/Dusk Lights
- 1 Rock Fence
- 3 Picnic Shelters
(2 w/ Fireplace Grills)
- 1 Wooden Bar Serving Area
- 1 Roadside Zoo
- 1 Pheasant Pen
- 3 County Storage Buildings
- 4 Swing Sets
10 Adult Swings
5 Children Swings
- 1 ADA Play Structure
(w/15 play components)
- 2 Merry-Go-Rounds
- 1 Historical Marker
- Shoreline Fishing
- Hiking Trails
- Cross Country Ski Trails
- Grass Parking Area
- Large Gravel Parking Area
- Asphalt Paved Parking Area
15 Vehicle Stalls



3. Bruemmerville Park

N7827 Willow Dr, Algoma, WI 54201



AMENITIES

- 1 Park Identification Sign
- 1 Restroom Building (Pit Toilet)
- 1 Picnic Shelter
- 3 Picnic Tables
- 1 Grill
- 2 Trash Bins
- 1 Climber
- 1 Swing Set
3 Adult Swings
2 Children Swings
- 1 Historical Marker
- 1 Walking Bridge
- Split-Rail Fence
- Shore Fishing
- Gravel Parking Area
3-5 Vehicle Stalls



4. Reckelberg Park

E2344 Sunset Rd, Luxemburg, WI 54217



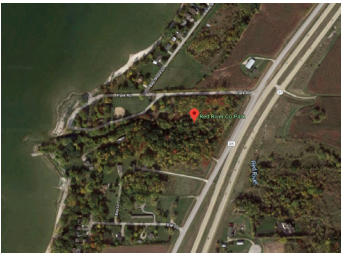
AMENITIES

- 3 Picnic Tables
- 2 Trash Bins
- 2 Benches
- 1 Grill
- Gravel Parking Area
25 Vehicle Stalls



5. Red River Park

N9455 Co Rd DK, Luxemburg, WI 54217

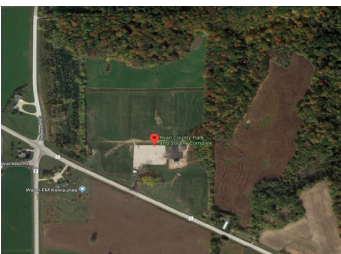


AMENITIES

- 1 Park Identification Sign
- 1 Restroom Building
- 1 Storage Facility
- 1 Picnic Shelter w/ Kitchen
- 12 Picnic Tables
- 5 Grills
- 7 Trash Bins
- 5 Overnight Lights
- 1 Flag
- 1 Memorial Plaque on Rock
- 1 Softball/Little League Field w/ Lights
- 1 Small Baseball Infield (Powder Puff/Little League)
- 2 Bleachers
- 1 Press Box
- 1 Scoreboard (Wireless)
- 1 Play Structure w/ 16 ADA Play Components (2014)
- Gravel Parking Area
15 Vehicle Stalls
- Parking Along Park Roads

6. Ryan Park

N4760 Co Rd C, Kewaunee, WI 54216

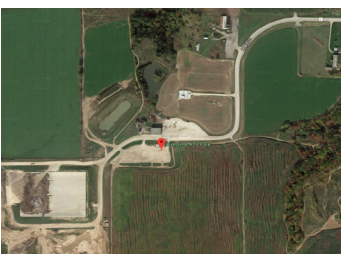


AMENITIES

- 1 Four Season Shelter w/ Kitchen and Restrooms
- 1 Timber Frame Picnic Shelter
- 6 Picnic Tables
- 6 Trash Bins
- 2 Miles of Hiking and Cross Country Ski Trails
- 4 Miles of Single Track Mountain Bike Trails and Snowshoe Trails
- 2 Walking Bridges
- 1 Storage Building
- 7 Soccer Fields
- 1 Asphalt Parking Lot
16 Vehicle Stalls (2 Handicap)
- 1 Gravel Parking Lot
192 Vehicle Spaces
- 1 Informational Monument - Settlers of Ryan
- 2 Informational Kiosks

7. Riverview ATV Park

E3725 Co Rd L, Kewaunee, WI 54216



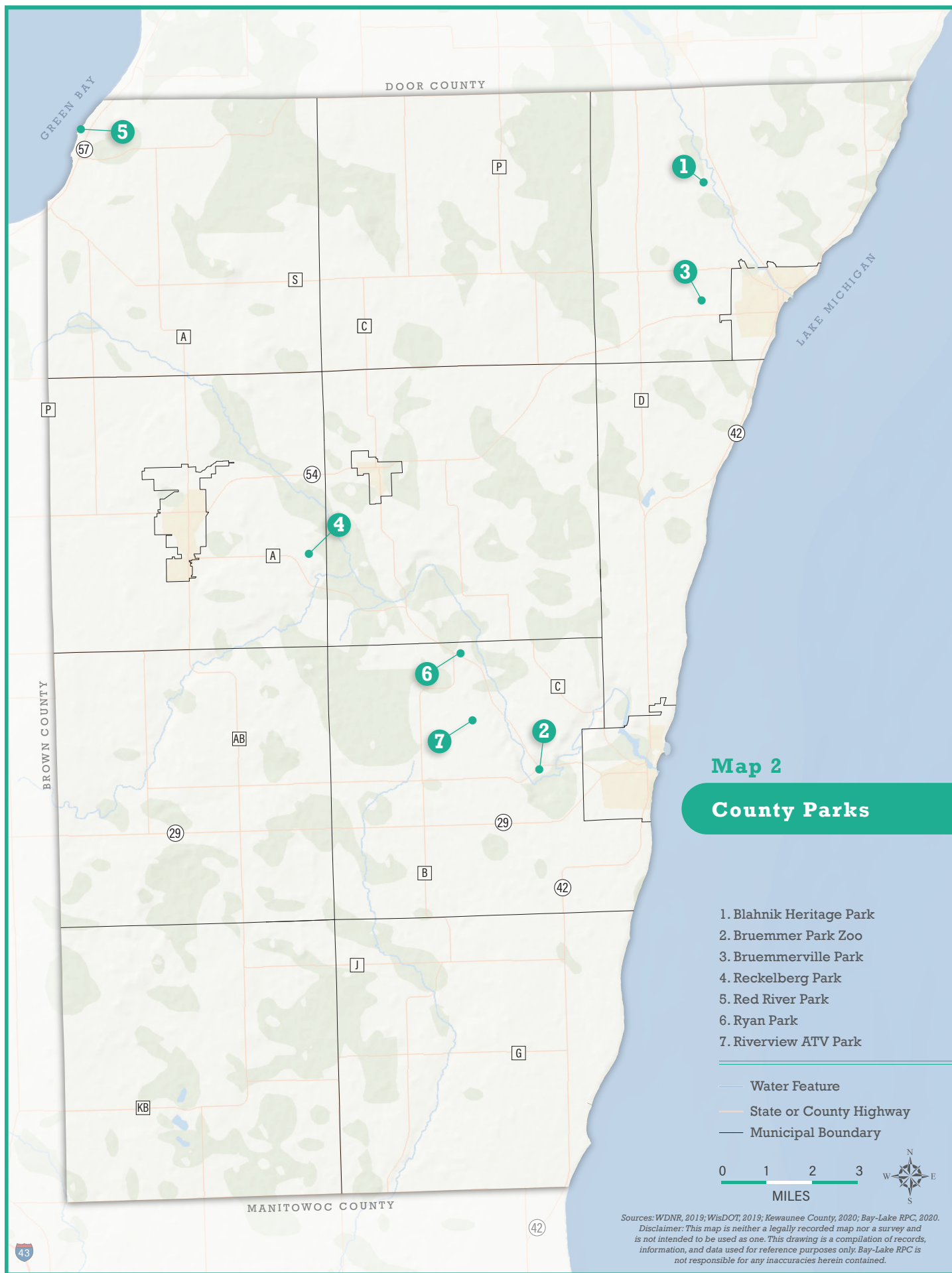
AMENITIES

- 1 Park Identification Sign
- 1 Picnic Shelter w/ Restroom Building
- 3 Storage Facilities
- 8 Picnic Tables
- 3 Trash Bins
- Mountain Bike Trails
- ATV and Off Road Motorcycle Riding Trails
- Large Gravel Parking Area
100 Vehicle/ATV Trailer Stalls



County Parks





Recreational Areas

1. Dana Farm

N3787 Ranson Moore Ln, Kewaunee, WI 54216



AMENITIES

- 1 Park Identification Sign
- 1 Memorial Rock w/ Plaque
- Split-Rail Fence
- Ranson Moore Historical Cabin and Root Cellar
- Gravel Parking Area
10-15 Vehicle Stalls
- 1 Warming Shelter with Restrooms
- 1 Ice Rink

2. Kewaunee County Fairgrounds

625 3rd St, Luxemburg, WI 54217



AMENITIES

- 1 Facility Identification Sign
- 5 Food Stands
- 1 Horse Barn
- 1 Dairy Barn
- 1 Poultry Barn
- 1 Poultry Open Air Pavilion
- 1 Hog/Sheep Barn
- 1 Track Maintenance Building
- 1 Storage Building/Shop
- 1 Restroom/Shower Building
- 1 Horseshow Area
- 1 Stock Car Dirt Track (1/3 Mile Clay)
- 1 Covered Grandstand
3,500 Seats
- 1 Grandstand Concession Building w/Kitchen, Cooler, Freezer
- 2 Restroom Buildings
- 8 Benches
- 36 Picnic Tables
- 1 Four Season Exhibit Hall w/ Office and Restrooms
- 1 Three Season Exhibit Hall
- 1 Showing Open Air Pavilion
- 1 Historic Marker
- 12 Electrical Pedestals w/ Double Service
- Large Grass, Gravel, and Asphalt Parking Areas
- 1 Bandstand

3. Winter Park Recreation Area

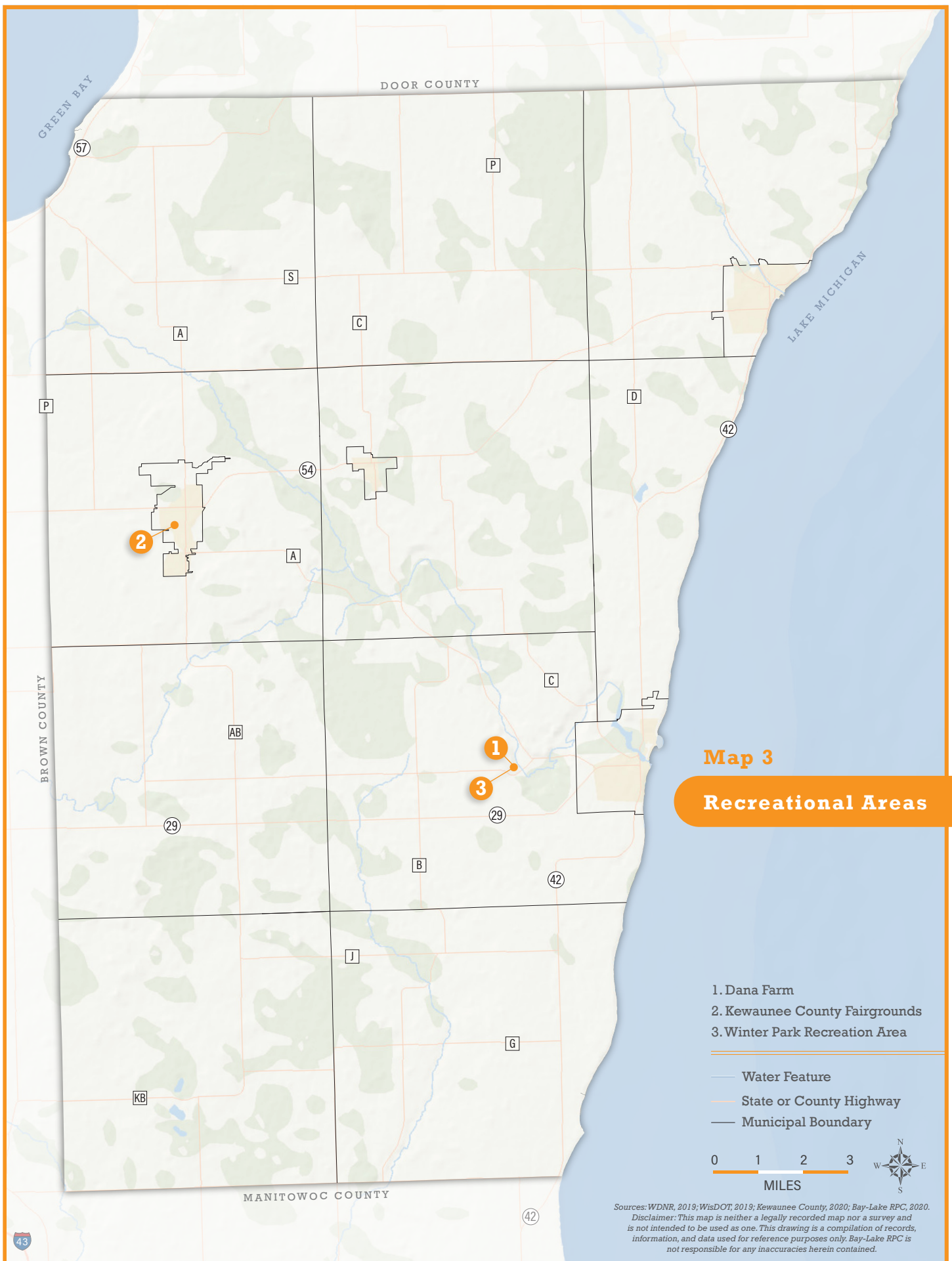
N3787 Ranson Moore Ln, Kewaunee, WI 54216



AMENITIES

- 1 Park Identification Sign
- 1 Ski Chalet w/ Restrooms and Meeting Area
- 2 Storage Facility
- 1 Ski and Snowboard Rental Building
- 4 Picnic Tables
- 1 Bench
- 3 Trash Bins
- 3 Overhead Halogen Lights
- 1 Disc Golf Course
27 Holes
- 1 Ski Hill w/5 Runs
- 1 Ski Hill w/T-Bar Lift
- 1 Tubing Hill w/6 Runs w/Magic Carpet Lift
- 1 Beginner Ski Hill w/Ropetow
- 1 Kiosk
- 2 DNR Fishing Ponds
- Mountain Bike Trails
- Hiking Trails
- 3 Gravel Parking Areas
130 Vehicle Stalls





County Trails



Kewaunee County is home to approximately **90 miles of trails**, including:
34 miles of the *Ahnapee State Trail*
55 miles of the *Ice Age Trail*

Ahnapee State Trail

Developed on the abandoned railroad right-of-way, the Ahnapee State Trail is a 48-mile multi-purpose state recreational facility that is located in both Kewaunee County and Door County. The trail is cooperatively managed by both counties, along with the State of Wisconsin. The trail begins with a segment that extends from the Village of Luxemburg to Casco Junction (near Sunset Road in the Town of Casco). It then splits in Casco Junction with one segment extending southeast to the City of Kewaunee and another segment navigating northeast to the City of Algoma, ultimately traveling north into Door County and to the City of Sturgeon Bay.



- Kewaunee County maintains 34 miles of the Ahnapee State Trail. This multi-use trail is primarily utilized by pedestrians, bicyclists, and equestrians (April 15-November 15), and is also able to be used for snowmobiling, cross country skiing, and snowshoeing.
- The Ahnapee State Trail provides connectivity to a number of Kewaunee County parks including Bruemmer Park Zoo, Reckelberg Park, and Blahnik Park. Restroom facilities are available at each of these parks for trail users.

Ice Age National Scenic Trail

The Ice Age Trail is a National and State scenic trail which passes through Kewaunee County and incorporates portions of the Ahnapee State Trail. The purpose of the trail is to tell the story of the Ice Age and continental glaciation along a scenic footpath.



Kewaunee County is home to nearly **205 miles of SNOWMOBILE TRAILS**, some of which overlap with other trails.

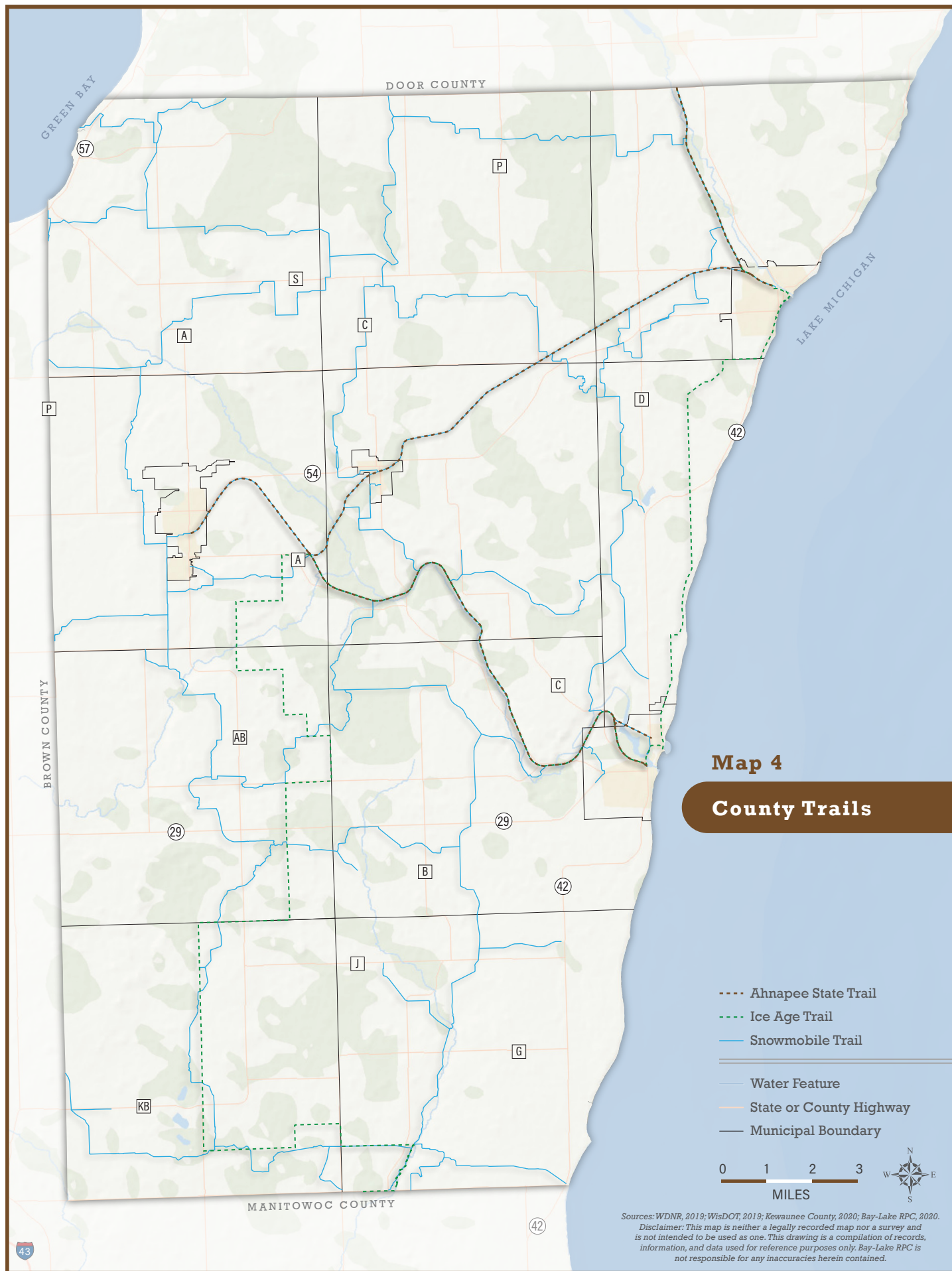
Kewaunee County Snowmobile Trail System

During the winter months, the snowmobile trail system provides designated snowmobile routes through Kewaunee County. The exact location of the trail may vary from year-to-year depending on new developments.

For detailed information regarding the county's snowmobile trails, contact the county's Promotion & Recreation Department, or one of the following snowmobile clubs that maintain the trails throughout the county.

- Algoma Snowriders Snowmobile Club
- Denmark Norsemen Snowmobile Club
- Kewaunee Moonriders Snowmobile Club
- Midnight Trail Riders Snowmobile Club
- Red River Snowmobile Club
- Spartan Snowmobile Club





• Accessibility

ADA Standards

The Americans with Disabilities Act (ADA) of 1990 requires that “reasonable accommodation” be made for the needs of the estimated one in five people in this country who are disabled. That is, all public and private goods and service providers and employers must remove all structural and communication barriers from facilities, or that they provide alternative access where feasible.

Guidelines for public structures such as restrooms, information centers, and other public and private buildings at those sites are available at the ADA.gov website. The site has design standards and compliance information.

The following are basic standards for accessibility that are recommended for accessibility to elements of recreational facilities:

- All restroom facilities should be accessible by persons with disabilities. Depending on the circumstances of the facility, it could require very little modification or an extensive renovation.
- At least one picnic table and one grill designed to accommodate persons in wheelchairs should be available at each park (if these types of facilities are not currently available).
- One in 25 parking stalls should be designated for disabled parking. These stalls should be the closest spaces to the park or facility entrance. The stall should have a direct route to the entrance; it is to be marked and adjacent to an access aisle of 60 inches, and must have an unobscured vertical sign that shows the universal symbol of accessibility. Slope of these spaces and aisles cannot exceed 1:50.
- Where water fountains are available, spouts should be no more than 36 inches above the finished floor. If the fountain is freestanding or built-in and does not have a clear space underneath, a clear floor space of 30 to 48 inches alongside the fountain for a parallel approach should be provided. A wall or post of at least 27 inches high by 17 to 19 inches deep by 30 inches wide should be provided. Controls should be located at the front edge of the fountain and operable with one hand without twisting the wrist.
- Firm, slip resistant, barrier-free pathways linking park facilities within each park are recommended. They should be at least 36 inches wide, with a 60 by 60 inch passing space or turnaround provided every 200 feet.

Selected Assessment of Accessibility Needs

Kewaunee County has made great progress in updating existing facilities and adding new transitional components and facilities to ensure greater access by all persons. Although improvements have been made, specific areas are still in need of updating. The following suggestions are presented as a recommendation guide to help plan for making the county park facilities more accessible.

East Alaska Lake:

- Provide at least one accessible picnic table and grill.
- Provide a stable walkway from the accessible parking stall to the boarding dock, if feasible.

West Alaska Lake:

- Provide at least one accessible picnic table and grill.
- Pave parking area or portion of parking area for accessible access to toilet and launch ramps.
- Ramp the area at the boarding dock to minimize the gap between the dock and the existing surface.
- Designate one parking stall on asphalt paved area for handicap accessibility.

Heidmann Lake

- Designate one parking stall, including signage and pavement markings in close proximity to the boarding docks.
- Add or modify one picnic table to meet ADA requirements.

Krohn's Lake

- Designate two disabled parking stalls, including signage and markings.
- Pave a portion of the parking lot to provide stable walkways from the designated parking to boarding dock and the restroom facility.
- Modify the existing wooden walkway from the parking lot to the restrooms to meet the 12:1 slope limits.
- Replace or renovate the existing restroom facility to meet ADA requirements.
- Add or modify one picnic table and grill to be ADA compliant.
- Provide a stable accessible area around the ADA compliant picnic facilities.

Shea's Lake

- Designate one parking stall, including signage and pavement markings in close proximity to the boarding docks.
- Add or modify one picnic table and the existing grill to meet ADA requirements.
- Provide stable walkways from the designated parking stall to the grill/picnic table.
- Add an ADA accessible port-a-potty to this park with stable pathways to access the facility.

• Accessibility

Selected Assessment of Accessibility Needs

Reckelberg Park:

- Purchase and install one picnic table to meet a ADA requirements.

Bruemmer Park Zoo:

- Modify the restroom entrances to minimize the threshold rise to less than ½ inch.
- Designate additional ADA accessible parking stalls with proper signage on the west end of the park. Provide stable surface walkways where needed.
- Modify or replace the restroom facilities to be ADA compliant. Modify the width of the restroom stalls, the height of the toilets, the height of the toilet paper dispensers, door knobs, etc.
- Add or modify three picnic tables and grills to be ADA compliant.
- Add fall protection or wood chips under the existing playground equipment.
- Provide ramp to new playground equipment area that goes over the existing timber railing around the perimeter of the playground. Provide at least one accessible picnic table and grill.

Bruemmerville Park:

- Designate one disabled parking stalls, including signage and pavement markings.
- Replace or renovate the existing restroom facility to meet ADA requirements.
- Add or modify one picnic table and grill to be ADA compliant.
- Provide a stable accessible area around ADA compliant picnic facilities.

Dana Farm/Winter Park:

- Designate two parking stalls, including signage within the existing parking facility.
- Provide an accessible picnic table that meets ADA requirements.

Riverview ATV Park

- Designate three disabled parking stalls, including signage and a 60-inch access lane between the stalls.
- Provide an accessible picnic table that meets ADA requirements.

Kewaunee County Fairgrounds

- Modify or replace the midway restroom facility to meet ADA standards.
- Designate one campsite as ADA accessible that is in close proximity to the restroom facility.

Selected Assessment of Accessibility Needs

Red River Park:

- Designate one parking stall near the playground equipment and ball fields as ADA accessible.
- Provide stable walkways from the designated parking stalls to the shelter, restroom, ball fields, and playground equipment.
- Provide one picnic table that is ADA accessible.
- Provide wood chips or other stable walkway under all existing playground equipment.

Ryan Park:

- Provide one picnic table that is ADA accessible.



• Outdoor Recreation Needs Assessment

Recreation Needs Standards

One method to assess community recreation needs is the standards system. Standards that have been developed by the National Recreation and Park Association (NRPA) provide a scale against which an existing recreation system can be measured so that guidelines for future needs can be created.

The NRPA Standards link the number of facility units and acreages to the county's population. Variations in outdoor recreation environments throughout the nation, as well as the multiplicity of planning procedures do exist, so there is no single type of resource and facility guideline that can completely meet all outdoor recreation planning needs. Therefore, the long standing NRPA standard of 10 acres/1,000 persons is recognized as a guide to be used with local and state plans along with the Statewide Comprehensive Outdoor Recreation Plan (SCORP) prepared by the DNR.

NRPA Standards

The NRPA suggests that, at a minimum, a county park system be composed of 10 acres of developed recreation land per 1,000 population. Based on this standard, Kewaunee County, with a population estimate of 20,360 in the year 2018, should provide approximately 204 acres of recreation land.

Together with local, county, and State lands; park and recreation alone provides over 4,000 acres of land for outdoor recreation. Kewaunee County exceeds the NRPA minimum standard for outdoor recreation.

State and Regional Recreational Trends and Needs

SCORP Analysis

Wisconsin Statewide Comprehensive Outdoor Recreation Plan (SCORP) 2019-2023, provides an analysis by the DNR of the recreation facility/activity priorities for the state, identifies primary issues, and establishes funding criteria. The following are the State of Wisconsin's goals for outdoor recreation.

1. **BOOST PARTICIPATION.** Increase Wisconsin residents' participation and frequency of participation in outdoor recreation.
2. **GROW PARTNERSHIPS.** Continue to strengthen connections and partnerships across the spectrum of agencies, organizations, and businesses with a vested interest in outdoor recreation.
3. **PROVIDE HIGH-QUALITY EXPERIENCES.** Provide opportunities and settings –across the full range of public and private recreation lands –that, collectively, meet the state's recreational needs.
4. **IMPROVE DATA TO ENHANCE VISITOR EXPERIENCES AND BENEFITS.** On an ongoing basis, gather, analyze and distribute data on recreation participation in Wisconsin and associated economic, health and social benefits.
5. **ENHANCE FUNDING AND FINANCIAL STABILITY.** Broaden and strengthen the funding sources for developing and managing outdoor recreation facilities and lands.



Outdoor Recreation Needs Assessment

SCORP Regional Trends and Needs

The 2019-2023 SCORP provides a Regional Opportunities Analysis (ROA) for each region of the state. Kewaunee County is within the six-county Upper Lake Michigan Coastal Region of Wisconsin. Some of the key trends and needs identified for the Upper Lake Michigan Coastal ROA according to public input from residents in the ROA include the following.

Upper Lake Michigan Coastal ROA Residents

TOP 10

Nature-based outdoor activities

Favorite

- Bicycling Trails
- Fishing - from a boat, canoe or kayak
- Walking, hiking, running on trails
- Swimming
- Wildlife/birdwatching
- Camping
- Canoeing/kayaking
- Cross-country skiing/snowshoeing
- Horseback riding
- Motorboating (waterski/tubing, personal watercraft)



Upper Lake Michigan Coastal ROA Residents

TOP 10

Nature-based outdoor activities

Most opportunities needed in their county

- Hiking/walking/running trails
- Horseback trails
- Paved bicycling trails
- Natural surface (dirt) bicycling trails
- Rustic/quiet campgrounds (pit toilets, no electricity or generators)
- Public shore access to lakes & streams
- Trails for motorized recreation (ATVs, UTVs, off-road motorcycles, etc.)
- Developed campgrounds (electric hook-ups, flush toilets, showers)
- Wildlife watching decks or platforms
- More local parks and playgrounds

• Proposed Improvements Plan

Recreation Capital Improvements, 2021-2025

Improvements to a park that significantly upgrade the park's value and overall usefulness are considered capital improvements. These improvements are identified and typically funded through county funds. Routine maintenance of existing facilities does not increase the facility's value or usefulness; therefore, routine maintenance expenses are usually funding through the county's recreation department operations and maintenance budget. Non-routine maintenance of park facilities such as renovating a boat launch facility is usually considered a capital improvement.

Capital improvements come about for several reasons. A governmental unit may make improvements to modernize outdated facilities, upgrade deficient facilities to correct health and safety hazards, to correct identified deficiencies, or to be in compliance with certain standards such as those set forth in the Americans with Disabilities Act of 1990.

Table 1 reflects the capital improvement plan for the next five years that was agreed upon by the Kewaunee County Parks, Promotion & Maintenance Committee.

Through the development of this capital improvement plan, a list of priority projects was also developed (Table 2).

Table 1: 2021-2025 Capital Improvements

Project Name	2021	2022	2023	2024	2025
West Alaska Lake					
Renovate boat launch and boarding dock	\$30,000				
Pave parking lot			\$25,000		
Add swimming beach					\$5,000
Bruemmerville Park					
Provide designated parking near park shelter		\$5,000			
Construct new restroom		\$10,000			
Provide Interpretive Signage		\$2,000			
Blahnik Heritage Park					
Construct pavilion for educational purposes					\$35,000
Erect educational signage marking park features					\$5,000
Install overhead lighting in parking lot					\$20,000
Red River Park					
Construct kayak/canoe launching facilities					\$15,000
Construct observation deck for bird watching					\$10,000
Renovate beach area					\$75,000
Fairgrounds					
Modify Midway restrooms (ADA)		\$15,000			
Blacktop areas near grandstands					\$15,000

Project Name	2021	2022	2023	2024	2025
Reckelberg Park					
Add park lighting			\$7,500		
Riverview ATV Park					
Improve signage	\$10,000				
Open air shelter addition	\$6,000				
Beginner riding area	\$5,000				
Vehicle wash bay	\$3,000				
Trail expansion			\$10,000	\$10,000	
Dana Farm					
Erect educational signage about the history of the park	\$5,000				
Winter Park Area					
Construct overhead lighting on ski hill for night use		\$15,000			
Install new chair lift for ski hill		\$275,000			
Bruemmer Park Zoo					
Environmental Education Center. Replace restroom and shop to meet ADA requirements		\$1,000,000			
Construct parking area within park to serve as a trailhead facility (near east kitchen)		\$45,000			
Construct parking area on west side of park		\$40,000			
New pheasant exhibit		\$250,000			
Ryan Park					
Install outdoor water fountain	\$5,000				
Develop trail linking park to Ahnapee State Trail			\$50,000		
Heidmann Lake					
Renovate boat launch ramps	\$15,000				
Renovate/replace existing boarding docks to meet ADA standards	\$28,000				
Ahnapee State Trail					
Trail resurfacing	\$20,000	\$20,000	\$20,000	\$20,000	\$20,000
Bridge replacement - City of Algoma			\$35,000		
Bridge Re-decking Kewaunee (Bruemmer Park)	\$8,000				
Restroom replacement rit toilets - County M parking lot			\$15,000		
Culvert replacement – Rio Creek area			\$30,000		
Inland Lakes Management Plan covering recreational use & vegetative control for invasive species plans for East & West Alaska, Shea's, Krohn's and Heidmann Lakes		\$30,000			

• Proposed Improvements Plan

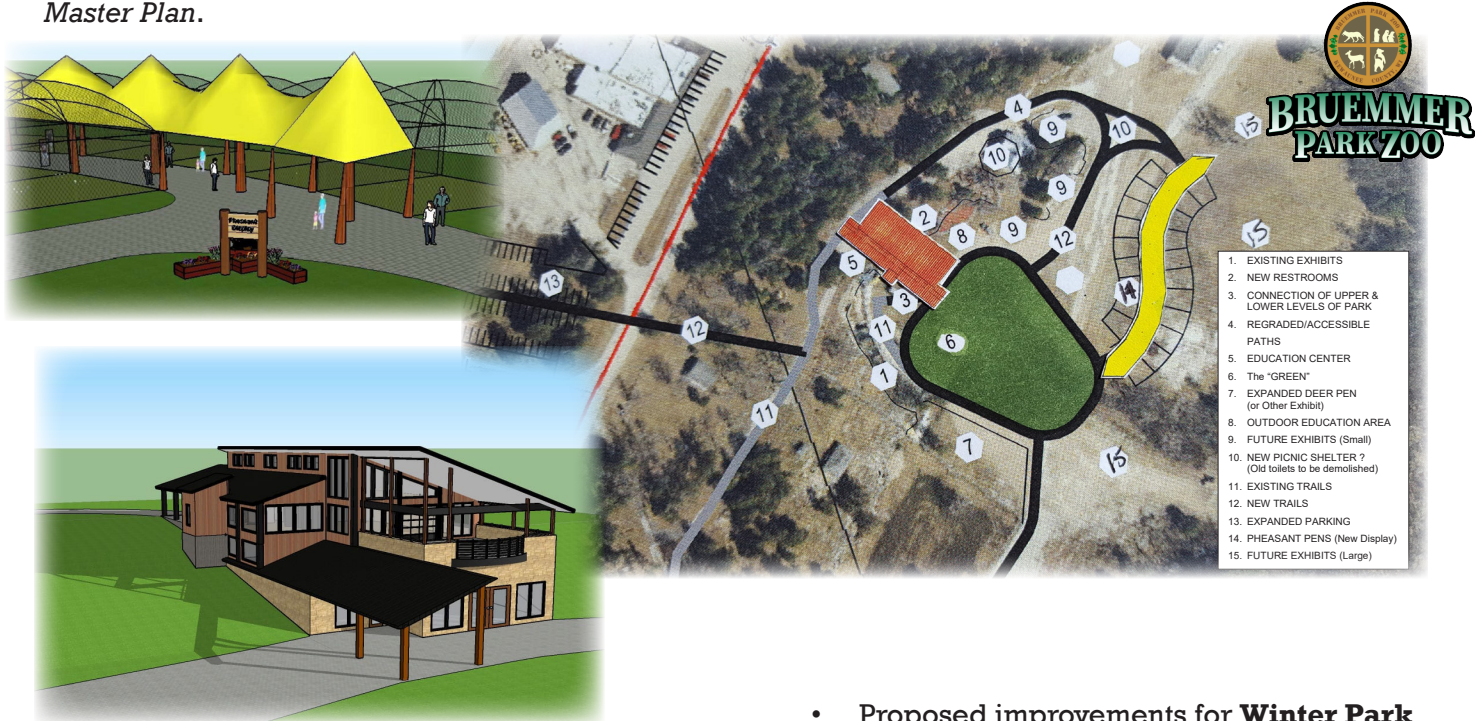
Capital Improvements Priority Projects

Table 2: Capital Improvements Priority Projects

Rank	Location	Project	Cost	Funding Sources
1	Bruemmer Park Zoo	Environmental Education Center	\$1,000,000.00	County/Grant/Private/Civic
2	Bruemmer Park Zoo	Pheasant Exhibit Addition to Zoo	\$250,000.00	County/Private/Civic
3	Bruemmerville Park	Replace Restrooms with ADA Accessible Restrooms	\$30,000.00	County/Grant
4	Heidmann Lake	Renovate Boat Launch and Docks to meet ADA Standards	\$28,000.00	County/Grant/Private
5	West Alaska Lake	Renovate Boat Launch and Docks to meet ADA Standards	\$30,000.00	County/Grant/Private
6	Ahnapee Trail	Resurface Existing Trails/Sign Replacement - per Plan	\$100,000.00	County/WDNR RTP Grant/Civic
7	Winter Park	Install Chairlift to Replace T-Bar	\$350,000.00	County/Private
8	Riverview ATV Park	Install Beginner's Course and Vehicle Wash Station	\$13,000.00	County/Grant
9	Ahnapee Trail	Replace Culvert (Algoma Section)	\$30,000.00	County/Grant
10	Ahnapee Trail	Replace Bridge(Algoma City Trail)	\$35,000.00	County/Grant
11	Ryan Park	Construct Bridge Connecting Ahnapee Trail to Ryan Park Bike/ Hiking Trails	\$125,000.00	County/Grant
12	West Alaska Lake	Pave Existing Parking Area and add ADA Spaces	\$40,000.00	County/Grant
13	Bruemmer Park Zoo	Replace Deer Enclosure Fencing	\$75,000.00	County/Private/Civic
14	Ryan Park	Acquire Property for Connecting Mountain Bike Trail to Riverview ATV Park - Current Trail Expansion	\$15,000.00	County/Grant/Private
15	Reckelberg park	Addition of ADA Accessible Restrooms	\$16,000.00	County/Grant
16	Ahnapee Trail	Replace Restrooms with ADA Accessible Restrooms	\$16,000.00	County/Grant
*	Inland Lakes Plan	Plan for Management of Recreational Use and Vegetation Control Practices at County Inland Lake Properties	\$30,000.00	County/Grant

Proposed Improvements Plan •

- Kewaunee County, along with the Zoological Society of Kewaunee County, Inc., prepared a **Bruemmer Park Zoo Master Plan** which envisions improvements that would provide for a better overall experience at the zoo and park. The plan identifies priority upgrades including the construction of an environmental education center and a pheasant exhibit. The environmental center would provide programming/education for nature-based classes for people of all ages and designate areas for zoo animal care. Other specific recommendations for the park can be found in the *Bruemmer Park Zoo Master Plan*.



- Red River Park** provides easy access to the waters of Green Bay. However, there is minimal beach area at this park despite the large shoreline. The county envisions periodic improvements to create more opportunities for swimming and other water-based activities at this park.



- Proposed improvements for **Winter Park** include the installation of a new chair lift as well as offering a variety of winter recreation activities, such as expanding the snowshoe trails.



Implementation recommendations listed within these and other projects take into consideration the limited funds available to Kewaunee County, and also the desires of the many interest groups that have a stake in these facility improvements. The county will continue to hold informational meetings with the various stakeholders to address evolving needs of the county recreation facilities.

• Funding Programs

Funding for recreational development can come from a number of sources both public and private. Most funding for this type of development comes from public local funds.

Primarily, local funds come from a number of sources including the sale of bonds, allocations from the local tax base, and donations from individuals and organizations.

Non-local funding can come from a number of sources, either in the form of a grant or a loan. Currently, the DNR, the U.S. Fish and Wildlife, and Rural Development (RDA) provide competitive funding relating to outdoor recreation.

The Wisconsin Waterways Commission is a good source of funding for acquiring and improving those amenities that primarily benefit recreational boaters in the state. Boat ramps, launches, parking lots, restrooms, and other boating related improvements can be 50% funded under this quarterly grant program administered by the WDNR.

Wisconsin Department of Natural Resources

All-Terrain Vehicle (ATV) Program

The ATV program provides funds to accommodate all-terrain vehicles through the acquisition, insurance, development, and maintenance of all-terrain vehicle trails and areas, including routes.

ATV Enforcement Patrol

The ATV Enforcement Patrol provides grants to county sheriffs for all-terrain vehicle patrols.

County Conservation Aids

The County Conservation Aids provide funds to counties or recognized Indian tribes to carry out fish or wildlife management projects that enhance fish and wildlife habitat or fishing and hunting opportunities.

Federal Aid in Sport Fish Restoration

The Federal Aid in Sport Fish Restoration provides funding for sport fish restoration and boating access including the construction of boat landings and fishing piers.

Recreational Boating Facilities Program

The Recreational Boating Facilities program provides funds to local units of government and qualified lake associations for the construction of capital improvements to provide safe recreational boating facilities. The program also provides financial assistance for feasibility studies related to the development of safe recreational boating facilities, purchase of aquatic weed harvesting equipment, purchase of navigation aids, dredging of channels of waterways, and chemical treatment of Eurasian water milfoil.

Recreational Trails Program

The Recreation Trails Program provides funds for motorized and non-motorized recreation trail rehabilitation, trail maintenance, trail development, and trail acquisition.

Snowmobile Trail Aids

Snowmobile Trail Aids provide funds to maintain trail systems that provide passage through a county and connections with adjacent counties.



County Snowmobile Enforcement Patrols

County Snowmobile Enforcement Patrols provide funds for county snowmobile patrols functioning as a law enforcement unit for the enforcement of Ch. 350, Wis. Stats.

Stewardship Local Assistance - Acquisition and Development of Local Parks

Stewardship Local Assistance - Acquisition and Development of Local Parks provides funding to acquire land, rights in land, and develop public outdoor recreation areas for nature-based outdoor recreation purposes.

Stewardship Local Assistance - Urban Rivers

Stewardship Local Assistance - Urban Rivers provides funds for the acquisition of land in urban areas. Projects focus on providing access for the greatest number of potential users, and providing the greatest opportunities for nature-based outdoor recreation.

Stewardship Local Assistance - Urban Greenspace

Stewardship Local Assistance - Urban Greenspace provides funds for the acquisition of land in and around urban areas. Projects focus on providing access for the greatest number of potential users, and providing the greatest opportunities for nature-based outdoor recreation.

Stewardship Local Assistance - Acquisition of Development Rights

Stewardship Local Assistance - Acquisition of Development Rights provides funding for the acquisition of development rights that provide or enhance nature-based outdoor recreation areas. Projects must be part of an approved Comprehensive Outdoor Recreation Plan.

Land and Water Conservation Fund (LWCF)

The LWCF provides financial assistance to state agencies, counties, villages, towns, school districts, cities, and Indian tribes for the acquisition and development of public outdoor recreation areas and facilities. The program provides up to 50 percent reimbursement grants for approved state and local projects. Competition for LWCF funds is on a statewide basis.

Rural Development Administration (USDA - Rural Development) (RDA)

The RDA provides a loan program, which provides Community Facility Project Loans to applicants with areas of less than 20,000 people, for the purpose of constructing, enlarging, or improving community facilities for health care, public safety, or public services. These loans should be secured with bonds or notes pledging taxes, assessments, or revenues.



